

# ABflo® 594 Rabbit anti-Mouse CD201/EPCR mAb

Catalog No.: A23970

## Basic Information

### Observed MW

### Calculated MW

27kDa

### Category

Primary antibody

### Applications

FC

### Cross-Reactivity

Mouse

### CloneNo number

ARC62043-ABflo594

### Conjugate

ABflo® 594. Ex:588nm. Em:604nm.

## Background

Predicted to enable protein C-terminus binding activity. Predicted to be involved in negative regulation of coagulation. Predicted to act upstream of or within blood coagulation. Located in centrosome. Is expressed in several structures, including blastocyst; endocardial tissue; female reproductive system; liver; and vascular element. Orthologous to human PROCRCR (protein C receptor).

## Recommended Dilutions

FC 5 µl per 10<sup>6</sup> cells in  
100 µl volume

## Immunogen Information

### Gene ID

19124

### Swiss Prot

Q64695

### Immunogen

Recombinant fusion protein containing a sequence corresponding to amino acids 18-210 of mouse CD201/EPCR(NP\_035301.2).

### Synonyms

Ccca; Epcr; Ccd41

## Contact

☎ | 400-999-6126

✉ | [cn.market@abclonal.com.cn](mailto:cn.market@abclonal.com.cn)

🌐 | [www.abclonal.com.cn](http://www.abclonal.com.cn)

## Product Information

### Source

Rabbit

### Isotype

IgG

### Purification

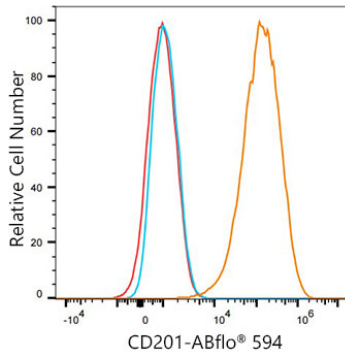
Affinity purification

### Storage

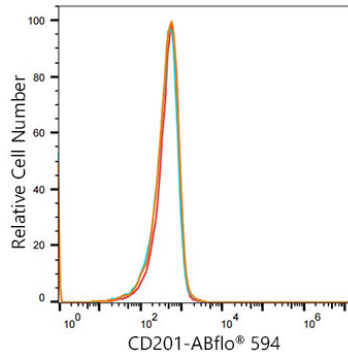
Store at 2-8°C. Avoid freeze.

Buffer: PBS with 0.03% proclin300,0.2% BSA,pH7.3.

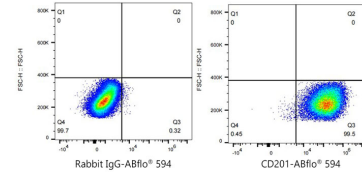
## Validation Data



Flow cytometry: 1X10<sup>6</sup> bEnd.3 cells were surface-stained with ABflo® 594 Rabbit anti-Mouse CD201/EPCR mAb(A23970,5 µl/Test,orange line) or ABflo® 594 Rabbit IgG isotype control (A23821,5 µl/Test,blue line).Non-fluorescently stained bEnd.3 cells were used as blank control (red line).



Flow cytometry: 1X10<sup>6</sup> U266 cells(negative control) cells were surface-stained with ABflo® 594 Rabbit anti-Mouse CD201/EPCR mAb(A23970,5 µl/Test,orange line) or ABflo® 594 Rabbit IgG isotype control (A23821,5 µl/Test,blue line).Non-fluorescently stained U266 cells were used as blank control (red line).



Flow cytometry:1X10<sup>6</sup> bEnd.3 cells were surface-stained with ABflo® 594 Rabbit IgG isotype control (A23821,5 µl/Test,left) or ABflo® 594 Rabbit anti-Mouse CD201/EPCR mAb(A23970,5 µl/Test,right).