

# ABflo® 488 Rabbit anti-Mouse CD5 mAb

**Catalog No.: A23971**

## Basic Information

**Observed MW**

Refer to figures

**Calculated MW**

54kDa

**Category**

Primary antibody

**Applications**

FC

**Cross-Reactivity**

Mouse

**CloneNo number**

ARC61614

**Conjugate**

ABflo® 488. Ex:491nm. Em:516nm.

## Recommended Dilutions

**FC** 5 µl per 10<sup>6</sup> cells in  
100 µl volume

## Background

CD5 is a type I transmembrane protein belonging to the scavenger receptor cysteine-enriched (SRCR) family, characterized by the presence of at least one SRCR domain containing 90-110 amino acids. CD5 is expressed in all mature T cells, B-1A subsets of mature B cells, and certain leukemia B cells. It is elevated in regulatory T and B cells (Tregs/Bregs). CD5 expression was also elevated in incompetent T and B cells. Elevated levels of CD5 have also been found in many autoimmune diseases. CD5 binds to T cell receptors (TCR) and negatively regulates T cell activation and differentiation. The expression of CD5 in tumor-infiltrating T lymphocytes was negatively correlated with their antitumor activity. Recently, it has been reported that CD5 binds directly to IL6 and mediates downstream signal transduction. CD5+ B cells promote tumor growth in animal models. Agents targeting CD5 are being actively explored as therapeutic interventions for cancer and other conditions.

## Immunogen Information

**Gene ID**

12507

**Swiss Prot**

P13379


**Immunogen**

Recombinant protein (or fragment). This information is considered to be commercially sensitive.

**Synonyms**

Ly-1; Ly-A; Ly-12; Lyt-1

## Contact

 | 400-999-6126 | [cn.market@abclonal.com.cn](mailto:cn.market@abclonal.com.cn) | [www.abclonal.com.cn](http://www.abclonal.com.cn)

## Product Information

**Source**

Rabbit

**Isotype**

IgG

**Purification**

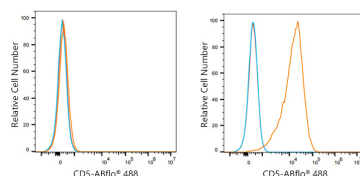
Affinity purification

**Storage**

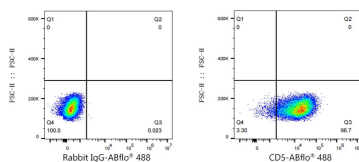
Store at 2-8°C. Avoid freeze.

Buffer: PBS containing 0.2% BSA, preserved with proclin300 or sodium azide (as specified on the Certificate of Analysis), pH 7.3.

## Validation Data



Flow cytometry:  $1 \times 10^6$  A20 cells (negative control, left) and CTLL-2 cells (right) were surface-stained with ABflo® 488 Rabbit anti-Mouse CD5 mAb (A23971, 5  $\mu$ l/Test, orange line) or ABflo® 488 Rabbit IgG isotype control (A22069, 5  $\mu$ l/Test, blue line). Non-fluorescently stained cells were used as blank control (red line).



Flow cytometry:  $1 \times 10^6$  CTLL-2 cells were surface-stained with ABflo® 488 Rabbit IgG isotype control (A22069, 5  $\mu$ l/Test, left) or ABflo® 488 Rabbit anti-Mouse CD5 mAb (ARC61614-01-ABf488, 5  $\mu$ l/Test, right).