

ABflo® 647 Rabbit anti-Mouse CD5 mAb

Catalog No.: A23972

Basic Information

Observed MW

Refer to figures

Calculated MW

54kDa

Category

Primary antibody

Applications

FC

Cross-Reactivity

Mouse

CloneNo number

ARC61614

Conjugate

ABflo® 647. Ex:648nm. Em:664nm.

Recommended Dilutions

FC 5 µl per 10⁶ cells in
100 µl volume

Background

CD5 is a type I transmembrane protein belonging to the scavenger receptor cysteine-enriched (SRCR) family, characterized by the presence of at least one SRCR domain containing 90-110 amino acids. CD5 is expressed in all mature T cells, B-1A subsets of mature B cells, and certain leukemia B cells. It is elevated in regulatory T and B cells (Tregs/Bregs). CD5 expression was also elevated in incompetent T and B cells. Elevated levels of CD5 have also been found in many autoimmune diseases. CD5 binds to T cell receptors (TCR) and negatively regulates T cell activation and differentiation. The expression of CD5 in tumor-infiltrating T lymphocytes was negatively correlated with their antitumor activity. Recently, it has been reported that CD5 binds directly to IL6 and mediates downstream signal transduction. CD5+ B cells promote tumor growth in animal models. Agents targeting CD5 are being actively explored as therapeutic interventions for cancer and other conditions.

Immunogen Information

Gene ID

12507

Swiss Prot

P13379


Immunogen

Recombinant protein (or fragment). This information is considered to be commercially sensitive.

Synonyms

Ly-1; Ly-A; Ly-12; Lyt-1

Contact

 | 400-999-6126 | cn.market@abclonal.com.cn | www.abclonal.com.cn

Product Information

Source

Rabbit

Isotype

IgG

Purification

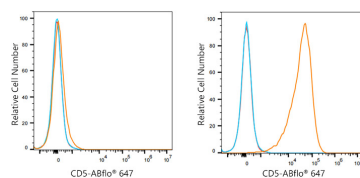
Affinity purification

Storage

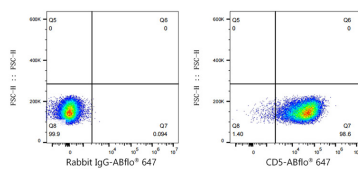
Store at 2-8°C. Avoid freeze.

Buffer: PBS containing 0.2% BSA, preserved with proclin300 or sodium azide (as specified on the Certificate of Analysis), pH 7.3.

Validation Data



Flow cytometry: 1×10^6 A20 cells (negative control, left) and CTLL-2 cells (right) were surface-stained with ABflo® 647 Rabbit anti-Mouse CD5 mAb (A23972, 5 μ l/Test, orange line) or ABflo® 647 Rabbit IgG isotype control (A22070, 5 μ l/Test, blue line). Non-fluorescently stained cells were used as blank control (red line).



Flow cytometry: 1×10^6 CTLL-2 cells were surface-stained with ABflo® 647 Rabbit IgG isotype control (A22070, 5 μ l/Test, left) or ABflo® 647 Rabbit anti-Mouse CD5 mAb (ARC61614-01-ABf647, 5 μ l/Test, right).