

# ABflo® 594 Rabbit anti-Mouse CD5 mAb

Catalog No.: A23973

## Basic Information

### Observed MW

Refer to figures

### Calculated MW

54kDa

### Category

Primary antibody

### Applications

FC

### Cross-Reactivity

Mouse

### CloneNo number

ARC61614-ABflo594

### Conjugate

ABflo® 594. Ex:588nm. Em:604nm.

## Recommended Dilutions

**FC** 5 µl per 10<sup>6</sup> cells in  
100 µl volume

## Background

CD5 is a type I transmembrane protein belonging to the scavenger receptor cysteine-enriched (SRCR) family, characterized by the presence of at least one SRCR domain containing 90-110 amino acids. CD5 is expressed in all mature T cells, B-1A subsets of mature B cells, and certain leukemia B cells. It is elevated in regulatory T and B cells (Tregs/Bregs). CD5 expression was also elevated in incompetent T and B cells. Elevated levels of CD5 have also been found in many autoimmune diseases. CD5 binds to T cell receptors (TCR) and negatively regulates T cell activation and differentiation. The expression of CD5 in tumor-infiltrating T lymphocytes was negatively correlated with their antitumor activity. Recently, it has been reported that CD5 binds directly to IL6 and mediates downstream signal transduction. CD5+ B cells promote tumor growth in animal models. Agents targeting CD5 are being actively explored as therapeutic interventions for cancer and other conditions.

## Immunogen Information

### Gene ID

12507

### Swiss Prot

P13379

### Immunogen

Recombinant fusion protein containing a sequence corresponding to amino acids 25-371 of mouse CD5 (NP\_031676.3).

### Synonyms

Ly-1; Ly-A; Ly-12; Lyt-1

## Contact

☎ | 400-999-6126

✉ | [cn.market@abclonal.com.cn](mailto:cn.market@abclonal.com.cn)

🌐 | [www.abclonal.com.cn](http://www.abclonal.com.cn)

## Product Information

### Source

Rabbit

### Isotype

IgG

### Purification

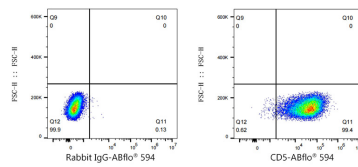
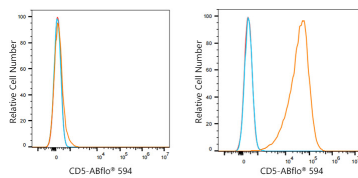
Affinity purification

### Storage

Store at 2-8°C. Avoid freeze.

Buffer: PBS with 0.03% proclin300,0.2% BSA,pH7.3.

## Validation Data



Flow cytometry:  $1 \times 10^6$  A20 cells (negative control, left) and CTLL-2 cells (right) were surface-stained with ABflo® 594 Rabbit anti-Mouse CD5 mAb (A23973, 5  $\mu$ l/Test, orange line) or ABflo® 594 Rabbit IgG isotype control (A23821, 5  $\mu$ l/Test, blue line). Non-fluorescently stained cells were used as blank control (red line).

Flow cytometry:  $1 \times 10^6$  CTLL-2 cells were surface-stained with ABflo® 594 Rabbit IgG isotype control (A23821, 5  $\mu$ l/Test, left) or ABflo® 594 Rabbit anti-Mouse CD5 mAb (ARC61614-01-ABf594, 5  $\mu$ l/Test, right).