

CXCR5/CD185 Rabbit mAb

Catalog No.: A23989 **Recombinant**

Basic Information

Observed MW

42kDa

Calculated MW

42kDa

Category

Primary antibody

Applications

ELISA, WB, FC

Cross-Reactivity

Human, Mouse

CloneNo number

ARC62169

Background

This gene encodes a multi-pass membrane protein that belongs to the CXC chemokine receptor family. It is expressed in mature B-cells and Burkitt's lymphoma. This cytokine receptor binds to B-lymphocyte chemoattractant (BLC), and is involved in B-cell migration into B-cell follicles of spleen and Peyer patches. Alternatively spliced transcript variants encoding different isoforms have been described for this gene.

Recommended Dilutions

WB 1:500 - 1:1000

FC 1:500-1:1000

Immunogen Information

Gene ID

643

Swiss Prot

P32302

Immunogen

Recombinant fusion protein containing a sequence corresponding to amino acids 1-47 of human CXCR5 (NP_001707.1)

Synonyms

BLR1; CD185; MDR15; CXCR5/CD185

Contact

☎ | 400-999-6126

✉ | cn.market@abclonal.com.cn

🌐 | www.abclonal.com.cn

Product Information

Source

Rabbit

Isotype

IgG

Purification

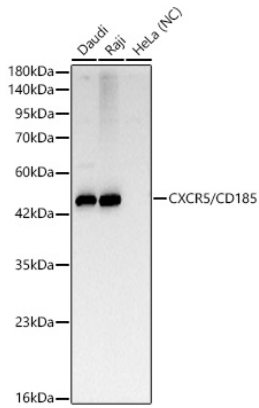
Affinity purification

Storage

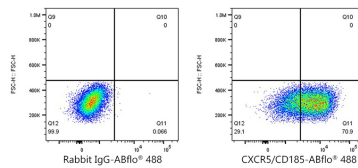
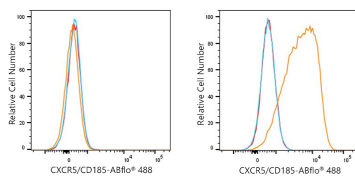
Store at -20°C. Avoid freeze / thaw cycles.

Buffer: PBS with 0.05% proclin300, 0.05% BSA, 50% glycerol, pH7.3.

Validation Data



Western blot analysis of various lysates, using CXCR5/CD185 Rabbit mAb (A23989) at 1:1000 dilution.
 Secondary antibody: HRP Goat Anti-Rabbit IgG (H+L) (AS014) at 1:10000 dilution.
 Lysates/proteins: 25ug per lane.
 Blocking buffer: 3% nonfat dry milk in TBST.
 Detection: ECL Basic Kit (RM00020).
 Negative control (NC): HeLa
 Exposure time: 5s.



Flow cytometry: 1×10^6 HeLa cells (negative control, left) and Daudi cells (right) were surface-stained with CXCR5/CD185 Rabbit mAb (A23989, 2 $\mu\text{g}/\text{mL}$, orange line) or ABflo® 488 Rabbit IgG isotype control (A22069, 5 $\mu\text{l}/\text{Test}$, blue line), followed by FITC conjugated goat anti-Rabbit pAb staining. Non-fluorescently stained cells were used as blank control (red line).

Flow cytometry: 1×10^6 Daudi cells were surface-stained with ABflo® 488 Rabbit IgG isotype control (A22069, 5 $\mu\text{l}/\text{Test}$, left) or CXCR5/CD185 Rabbit mAb (A23989, 2 $\mu\text{g}/\text{mL}$, right).