

[KD Validated] PHF11 Rabbit mAb

Catalog No.: A23994 **Recombinant**

Basic Information

Observed MW

34 kDa

Calculated MW

38 kDa

Category

Primary antibody

Applications

WB, ELISA

Cross-Reactivity

Human, Mouse, Rat

CloneNo number

ARC62550

Background

This gene encodes a protein containing a PHD (plant homeodomain) type zinc finger. This gene has been identified in some studies as a candidate gene for asthma. Naturally-occurring readthrough transcription may occur from the upstream SETDB2 (SET domain bifurcated 2) gene to this locus. Alternative splicing results in multiple transcript variants.

Recommended Dilutions

WB 1:1000 - 1:4000

ELISA Recommended starting concentration is 1 µg/mL. Please optimize the concentration based on your specific assay requirements.

Immunogen Information

Gene ID

51131

Swiss Prot

Q9UIL8

Immunogen

Recombinant protein (or fragment). This information is considered to be commercially sensitive.

Synonyms

APY; BCAP; IGEL; IGER; IGER; NYREN34; NY-REN-34; [KD Validated] PHF11

Contact

☎ | 400-999-6126

✉ | cn.market@abclonal.com.cn

🌐 | www.abclonal.com.cn

Product Information

Source

Rabbit

Isotype

IgG

Purification

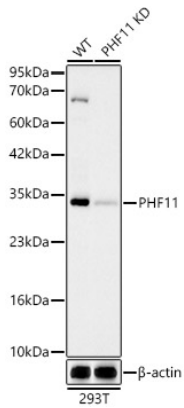
Affinity purification

Storage

Store at -20°C. Avoid freeze / thaw cycles.

Buffer: PBS containing 50% glycerol and 0.05% BSA, preserved with proclin300 or sodium azide (as specified on the Certificate of Analysis), pH 7.3.

Validation Data



Western blot analysis of lysates from wild type (WT) and PHF11 knockdown (KD) 293T cells, using [KD Validated] PHF11 Rabbit mAb (A23994) at 1:2000 dilution.

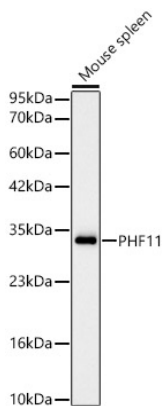
Secondary antibody: HRP-conjugated Goat anti-Rabbit IgG (H+L) (AS014) at 1:10000 dilution.

Lysates/proteins: 25 µg per lane.

Blocking buffer: 3% nonfat dry milk in TBST.

Detection: ECL Basic Kit (RM00020).

Exposure time: 30s.



Western blot analysis of lysates from Mouse spleen, using [KD Validated] PHF11 Rabbit mAb (A23994) at 1:2000 dilution.

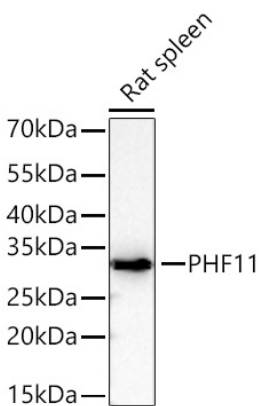
Secondary antibody: HRP-conjugated Goat anti-Rabbit IgG (H+L) (AS014) at 1:10000 dilution.

Lysates/proteins: 25 µg per lane.

Blocking buffer: 3% nonfat dry milk in TBST.

Detection: ECL Basic Kit (RM00020).

Exposure time: 30s.



Western blot analysis of lysates from Rat spleen using [KD Validated] PHF11 Rabbit mAb (A23994) at 1:1000 dilution incubated overnight at 4°C.

Secondary antibody: HRP-conjugated Goat anti-Rabbit IgG (H+L) (AS014) at 1:10000 dilution.

Lysates/proteins: 25 µg per lane.

Blocking buffer: 3% nonfat dry milk in TBST.

Detection: ECL Basic Kit (RM00020).

Exposure time: 90 s.