

SHB Rabbit mAb

Catalog No.: A24000 **Recombinant**

Basic Information

Observed MW

60kDa

Calculated MW

55kDa

Category

Primary antibody

Applications

WB,ELISA

Cross-Reactivity

Human, Mouse, Rat

CloneNo number

ARC3191

Background

Enables phosphotyrosine residue binding activity. Predicted to be involved in several processes, including angiogenesis; apoptotic process; and signal transduction. Predicted to act upstream of or within several processes, including hematopoietic stem cell proliferation; negative regulation of oocyte maturation; and positive regulation of immune response. Located in cytoplasmic ribonucleoprotein granule; cytosol; and nucleoplasm.

Recommended Dilutions

WB 1:500 - 1:2000

ELISA Recommended starting concentration is 1 µg/mL. Please optimize the concentration based on your specific assay requirements.

Immunogen Information

Gene ID

6461

Swiss Prot

Q15464

Immunogen

Recombinant fusion protein containing a sequence corresponding to amino acids 409-509 of human SHB (NP_003019.2).

Synonyms

bA3J10.2; SHB

Contact

☎ | 400-999-6126

✉ | cn.market@abclonal.com.cn

🌐 | www.abclonal.com.cn

Product Information

Source

Rabbit

Isotype

IgG

Purification

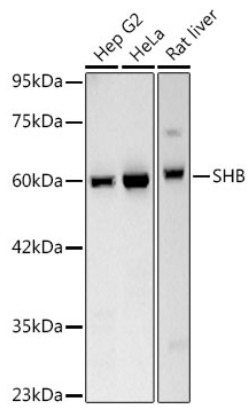
Affinity purification

Storage

Store at -20°C. Avoid freeze / thaw cycles.

Buffer: PBS with 0.02% sodium azide,0.05% BSA,50% glycerol,pH7.3.

Validation Data



Western blot analysis of various lysates, using SHB Rabbit mAb (A24000) at 1:600 dilution.
Secondary antibody: HRP-conjugated Goat anti-Rabbit IgG (H+L) (AS014) at 1:10000 dilution
Lysates/proteins: 25 μ g per lane.
Blocking buffer: 3% nonfat dry milk in TBST.
Detection: ECL Basic Kit (RM00020).
Exposure time: 30s.