

OXR1 Rabbit mAb

Catalog No.: A24005 **Recombinant**

Basic Information

Observed MW

139kDa

Calculated MW

24-98kDa

Category

Primary antibody

Applications

ELISA, WB, IF/ICC

Cross-Reactivity

Human, Mouse, Rat

CloneNo number

ARC63009

Background

Predicted to enable oxidoreductase activity. Predicted to be involved in response to oxidative stress. Predicted to act upstream of or within several processes, including adult walking behavior; negative regulation of neuron death; and negative regulation of peptidyl-cysteine S-nitrosylation. Predicted to be located in mitochondrion and nucleolus. Predicted to be active in nucleus. Implicated in cerebellar hypoplasia/atrophy, epilepsy, and global developmental delay.

Recommended Dilutions

WB 1:500 - 1:1000

IF/ICC 1:50 - 1:200

Immunogen Information

Gene ID

55074

Swiss Prot

Q8N573

Immunogen

Recombinant fusion protein containing a sequence corresponding to amino acids 705-874 of human OXR1(NP_001185461.1).

Synonyms

TLDC3; CHEGDD; Nbla00307; OXR1

Contact

☎ | 400-999-6126

✉ | cn.market@abclonal.com.cn

🌐 | www.abclonal.com.cn

Product Information

Source

Rabbit

Isotype

IgG

Purification

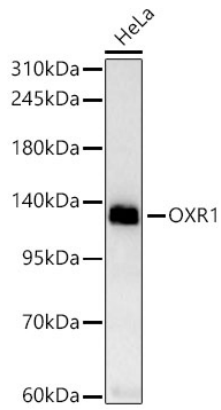
Affinity purification

Storage

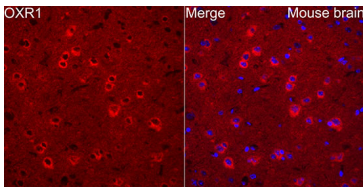
Store at -20°C. Avoid freeze / thaw cycles.

Buffer: PBS with 0.05% proclin300, 0.05% BSA, 50% glycerol, pH7.3.

Validation Data



Western blot analysis of HeLa, using OXR1 Rabbit mAb (A24005) at 1:1000 dilution.
Secondary antibody: HRP Goat Anti-Rabbit IgG (H+L) (AS014) at 1:10000 dilution.
Lysates/proteins: 25µg per lane.
Blocking buffer: 3% nonfat dry milk in TBST.
Detection: ECL Basic Kit (RM00020).
Exposure time: 60s.



Immunofluorescence analysis of mouse brain using OXR1 Rabbit mAb (A24005) at dilution of 1:200 (40x lens). Blue: DAPI for nuclear staining.