

Amylin/DAP Rabbit mAb

Catalog No.: A24014 **Recombinant**

Basic Information

Observed MW

35kDa

Calculated MW

10kDa

Category

Primary antibody

Applications

ELISA, WB, IHC-P, IF/ICC

Cross-Reactivity

Human, Mouse, Rat

CloneNo number

ARC62989

Background

This gene encodes a member of the calcitonin family of peptide hormones. This hormone is released from pancreatic beta cells following food intake to regulate blood glucose levels and act as a satiation signal. Human patients with type 1 and advanced type 2 diabetes exhibit reduced levels of the encoded hormone in blood and pancreas. This protein also exhibits a bactericidal, antimicrobial activity.

Recommended Dilutions

WB	1:1000 - 1:5000
IHC-P	1:50 - 1:200
IF/ICC	1:50 - 1:200

Immunogen Information

Gene ID

3375

Swiss Prot

P10997

Immunogen

Recombinant fusion protein containing a sequence corresponding to amino acids 34-70 of human Amylin/DAP (NP_000406.1).

Synonyms

DAP; IAP; Amylin/DAP

Contact

☎ | 400-999-6126

✉ | cn.market@abclonal.com.cn

🌐 | www.abclonal.com.cn

Product Information

Source

Rabbit

Isotype

IgG

Purification

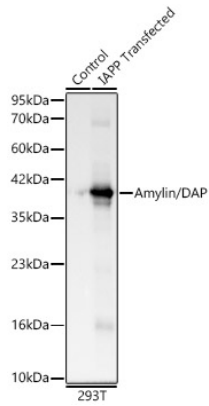
Affinity purification

Storage

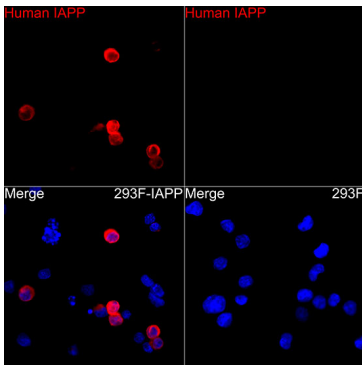
Store at -20°C. Avoid freeze / thaw cycles.

Buffer: PBS with 0.05% proclin300, 0.05% BSA, 50% glycerol, pH7.3.

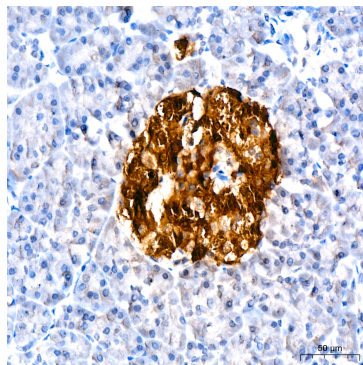
Validation Data



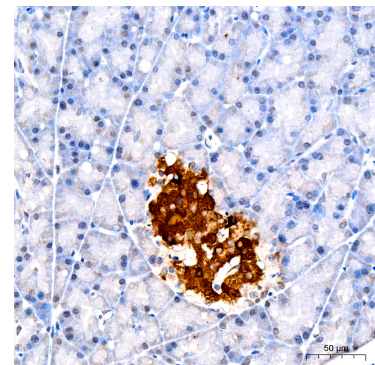
Western blot analysis of 293F-IAPP, using Amylin/DAP Rabbit mAb (A24014) at 1:2000 dilution. Secondary antibody: HRP Goat Anti-Rabbit IgG (H+L) (AS014) at 1:10000 dilution. Lysates/proteins: 25ug per lane. Blocking buffer: 3% nonfat dry milk in TBST. Detection: ECL Basic Kit (RM00020). Exposure time: 5s.



Immunofluorescence analysis of 293F-IAPP and 293F cells using Amylin/DAP Rabbit mAb (A24014) at dilution of 1:200 (40x lens). Blue: DAPI for nuclear staining.



Immunohistochemistry analysis of paraffin-embedded human pancreas using Amylin/DAP Rabbit mAb (A24014) at dilution of 1:200 (40x lens). Perform high pressure antigen retrieval with 10 mM citrate buffer pH 6.0 before commencing with IHC staining protocol.



Immunohistochemistry analysis of paraffin-embedded rat pancreas using Amylin/DAP Rabbit mAb (A24014) at dilution of 1:200 (40x lens). Perform high pressure antigen retrieval with 10 mM citrate buffer pH 6.0 before commencing with IHC staining protocol.