

BRAF V600E Rabbit mAb

Catalog No.: A24020 **Recombinant** **1 Publications**

Basic Information

Observed MW

85kDa

Calculated MW

84kDa

Category

Primary antibody

Applications

ELISA,WB,IF/ICC

Cross-Reactivity

Human

CloneNo number

ARC62593

Background

This gene encodes a protein belonging to the RAF family of serine/threonine protein kinases. This protein plays a role in regulating the MAP kinase/ERK signaling pathway, which affects cell division, differentiation, and secretion. Mutations in this gene, most commonly the V600E mutation, are the most frequently identified cancer-causing mutations in melanoma, and have been identified in various other cancers as well, including non-Hodgkin lymphoma, colorectal cancer, thyroid carcinoma, non-small cell lung carcinoma, hairy cell leukemia and adenocarcinoma of lung. Mutations in this gene are also associated with cardiofaciocutaneous, Noonan, and Costello syndromes, which exhibit overlapping phenotypes. A pseudogene of this gene has been identified on the X chromosome.

Recommended Dilutions

WB	1:1000-1:2000
IF	1:50- 1 : 200

Immunogen Information

Gene ID

673

Swiss Prot

P15056

Immunogen

A synthetic peptide corresponding to a sequence within amino acids 507-606 of B-Raf (NP_004324.2).

Synonyms

NS7; B-raf; BRAF1; RAFB1; B-RAF1; BRAF-1; BRAF V600E

Contact

☎ | 400-999-6126

✉ | cn.market@abclonal.com.cn

🌐 | www.abclonal.com.cn

Product Information

Source

Rabbit

Isotype

IgG

Purification

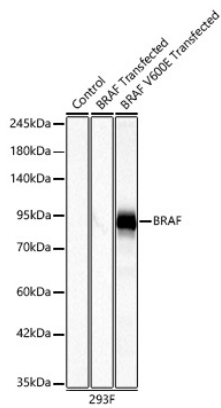
Affinity purification

Storage

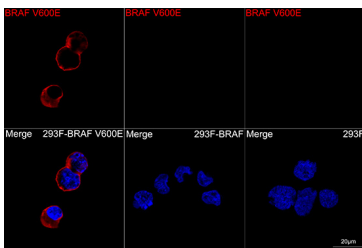
Store at -20°C. Avoid freeze / thaw cycles.

Buffer: PBS with 0.05% proclin300,0.05% BSA,50% glycerol,pH7.3.

Validation Data



Western blot analysis of lysates from wild type (WT) 293T cells transfected with BRAF and 293T cells transfected with BRAF V600E using B-Raf Rabbit mAb(A24020) at 1:1000 dilution. Secondary antibody: HRP Goat Anti-Rabbit IgG (H+L) (AS014) at 1:10000 dilution. Lysates/proteins: 25ug per lane. Blocking buffer: 3% nonfat dry milk in TBST. Detection: ECL Basic Kit (RM00020). Exposure time: 1s.



Confocal imaging of 293F-BRAF V600E and 293F-BRAF and 293F cells using BRAF V600E Rabbit mAb (A24020, at dilution of 1:200) (Red). DAPI was used for nuclear staining (blue). Objective: 100x.