

CD44 Rabbit mAb

Catalog No.: A24023

Recombinant

1 Publications

Basic Information

Observed MW

80kDa

Calculated MW

80kDa

Category

Primary antibody

Applications

WB, IHC-P, IF/ICC, ELISA

Cross-Reactivity

Human

CloneNo number

ARC52410

Background

The protein encoded by this gene is a cell-surface glycoprotein involved in cell-cell interactions, cell adhesion and migration. It is a receptor for hyaluronic acid (HA) and can also interact with other ligands, such as osteopontin, collagens, and matrix metalloproteinases (MMPs). This protein participates in a wide variety of cellular functions including lymphocyte activation, recirculation and homing, hematopoiesis, and tumor metastasis. Transcripts for this gene undergo complex alternative splicing that results in many functionally distinct isoforms, however, the full length nature of some of these variants has not been determined. Alternative splicing is the basis for the structural and functional diversity of this protein, and may be related to tumor metastasis.

Recommended Dilutions

WB 1:3000 - 1:12000**IHC-P** 1:1000 - 1:5000**IF/ICC** 1:200 - 1:800

ELISA Recommended starting concentration is 1 µg/mL. Please optimize the concentration based on your specific assay requirements.

Immunogen Information

Gene ID

960

Swiss Prot

P16070

Immunogen

Recombinant protein (or fragment). This information is considered to be commercially sensitive.

Synonyms

IN; LHR; MC56; MDU2; MDU3; MIC4; Pgp1; CDW44; CSPG8; H-CAM; HCELL; ECM-III; HUTCH-1; HUTCH-I; ECMR-III; Hermes-1; CD44

Contact

 | 400-999-6126 | cn.market@abclonal.com.cn | www.abclonal.com.cn

Product Information

Source

Rabbit

Isotype

IgG

Purification

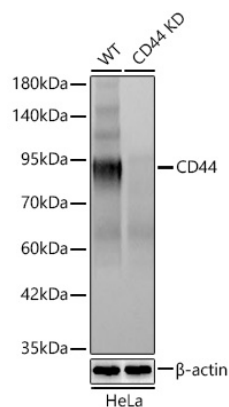
Protein A purified

Storage

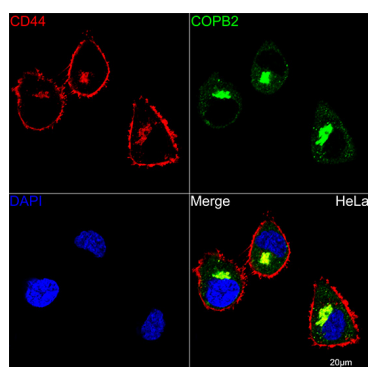
Store at -20°C. Avoid freeze / thaw cycles.

Buffer: PBS containing 50% glycerol and 0.05% BSA, preserved with proclin300 or sodium azide (as specified on the Certificate of Analysis), pH 7.3.

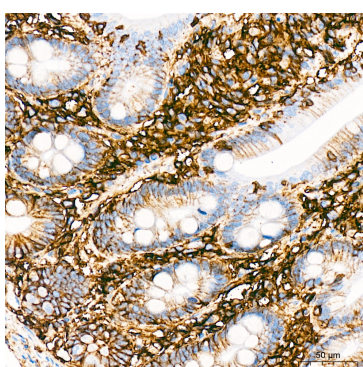
Validation Data



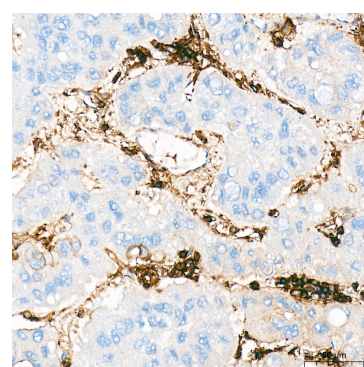
Western blot analysis of lysates from wild type (WT) and CD44 knockdown (KD) HeLa cells using CD44 Rabbit mAb (A24023) at 1:10000 dilution incubated overnight at 4°C.
 Secondary antibody: HRP-conjugated Goat anti-Rabbit IgG (H+L) (AS014) at 1:10000 dilution.
 Lysates/proteins: 25 µg per lane.
 Blocking buffer: 3% nonfat dry milk in TBST.
 Detection: ECL Basic Kit (RM00020).
 Exposure time: 15s.



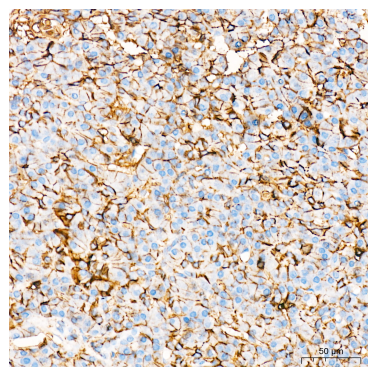
Confocal imaging of HeLa cells using CD44 Rabbit mAb (A24023, dilution 1:200)(Red). The cells were counterstained with COPB2 Rabbit mAb (A22381, dilution 1:200) (Green). DAPI was used for nuclear staining (blue). Objective: 100x.



Immunohistochemistry analysis of paraffin-embedded Human colon tissue using CD44 Rabbit mAb (A24023) at a dilution of 1:3000 (40x lens). High pressure antigen retrieval performed with 0.01M Citrate Buffer (pH 6.0) prior to IHC staining.



Immunohistochemistry analysis of paraffin-embedded Human liver cancer tissue using CD44 Rabbit mAb (A24023) at a dilution of 1:3000 (40x lens). High pressure antigen retrieval performed with 0.01M Citrate Buffer (pH 6.0) prior to IHC staining.



Immunohistochemistry analysis of paraffin-embedded Human pancreas tissue using CD44 Rabbit mAb (A24023) at a dilution of 1:3000 (40x lens). High pressure antigen retrieval performed with 0.01M Citrate Buffer (pH 6.0) prior to IHC staining.