

ALPK1 Rabbit pAb

Catalog No.: A24028

Basic Information

Observed MW

150kDa

Calculated MW

139kDa

Category

Primary antibody

Applications

WB

Cross-Reactivity

Human

Background

Alpha-protein kinase 1, also known as alpha-kinase 1 (ALPK1), is associated with chronic kidney disease (CKD), myocardial infarction, gout and type 2 diabetes mellitus (DM). ALPK1 mutant has been reported to cause severe defects in motor co-ordination in mice. ALPK1 enhances the expression of proinflammatory cytokines including IL-1 β , IL-8 and TGF- β 1 in cultured human THP1 and human embryonic kidney 293 (HEK293) cells. ALPK1 short isoform (108 kDa) was highly expressed in brain, spinal cord, heart, lung, spleen, thymus, small intestine, skin and testis, while detectable inskeletal muscle and kidney. ALPK1 large isoform (130 kDa) appeared in heart, lung, thymus and skin.

Recommended Dilutions

WB 1:500 - 1:1000

Immunogen Information

Gene ID

80216

Swiss Prot

Q96QP1

Immunogen

Recombinant fusion protein containing a sequence corresponding to amino acids 1-473 of human ALPK1(NP_079420.3).

Synonyms

LAK; ROSAH; 8430410J10Rik; ALPK1

Contact

☎ | 400-999-6126

✉ | cn.market@abclonal.com.cn

🌐 | www.abclonal.com.cn

Product Information

Source

Rabbit

Isotype

IgG

Purification

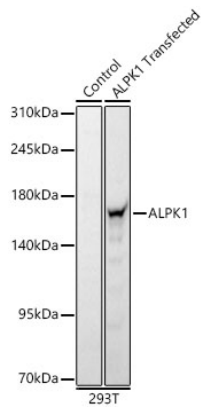
Affinity purification

Storage

Store at -20°C. Avoid freeze / thaw cycles.

Buffer: PBS with 0.05% proclin300,50% glycerol,pH7.3.

Validation Data



Western blot analysis of lysates from wild type (WT) and 293T cells transfected with ALPK1 using ALPK1 Rabbit pAb (A24028) at 1:1000 dilution.
Secondary antibody: HRP-conjugated Goat anti-Rabbit IgG (H+L) (AS014) at 1:10000 dilution.
Lysates/proteins: 25 µg per lane.
Blocking buffer: 3% nonfat dry milk in TBST.
Detection: ECL Basic Kit (RM00020).
Exposure time: 10s.

WB samples for antibody validation are kindly provided by Dr. Feng Shao, NIBS