

# SMAD2/SMAD3 Rabbit pAb

Catalog No.: A24037

## Basic Information

### Observed MW

95kDa

### Calculated MW

48kDa/52kDa/25kDa/35kDa/43kDa

### Category

Primary antibody

### Applications

WB,IF/ICC,ChIP

### Cross-Reactivity

Human

## Background

The protein encoded by this gene belongs to the SMAD, a family of proteins similar to the gene products of the Drosophila gene 'mothers against decapentaplegic' (Mad) and the C. elegans gene Sma. SMAD proteins are signal transducers and transcriptional modulators that mediate multiple signaling pathways. This protein functions as a transcriptional modulator activated by transforming growth factor-beta and is thought to play a role in the regulation of carcinogenesis.

## Recommended Dilutions

**WB** 1:500 - 1:1000

**IF/ICC** 1:50 - 1:200  
ChIP 5µg antibody for 10µg-15µg of Chromatin

## Immunogen Information

### Gene ID

4087/4088

### Swiss Prot

Q15796/P84022

### Immunogen

Recombinant fusion protein containing a sequence corresponding to amino acids 175-270 of Human SMAD2/SMAD3(NP\_005892.1).

### Synonyms

HSPC193; HsT17436; JV15-2; LDS1C; LDS3; MADH3; SMAD2/SMAD3

## Contact

☎ | 400-999-6126

✉ | [cn.market@abclonal.com.cn](mailto:cn.market@abclonal.com.cn)

🌐 | [www.abclonal.com.cn](http://www.abclonal.com.cn)

## Product Information

### Source

Rabbit

### Isotype

IgG

### Purification

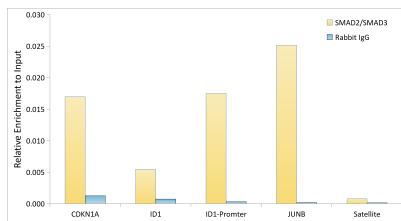
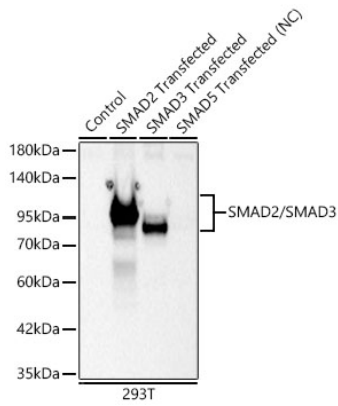
Affinity purification

### Storage

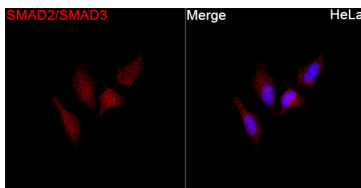
Store at -20°C. Avoid freeze / thaw cycles.

Buffer: PBS with 0.02% sodium azide, 50% glycerol, pH7.3.

## Validation Data



Chromatin immunoprecipitation was performed with 15 µg of cross-linked chromatin from A549 cells treated by TGF-β (2ng/ml, 4-6h), using 5 µg of SMAD2/SMAD3 (A24037) and Rabbit IgG isotype control (AC042). The enrichment of immunoprecipitated DNA at different genomic loci was examined by quantitative PCR. The histogram compares the ratio of the immunoprecipitated DNA to the input at given loci.



Immunofluorescence analysis of HeLa cells using SMAD2/SMAD3 Rabbit pAb (A24037) at a dilution of 1:100 (40x lens). Secondary antibody: Cy3 Goat Anti-Rabbit IgG (H+L) (AS007) at 1:500 dilution. Blue: DAPI for nuclear staining.