

GSDMD (Full length+C terminal)Rabbit pAb

Catalog No.: A24041

Basic Information

Observed MW

23kDa/

Calculated MW

53kDa

Category

Primary antibody

Applications

WB

Cross-Reactivity

Human

Background

Enables phospholipid binding activity and wide pore channel activity. Involved in several processes, including defense response to bacterium; positive regulation of interleukin-1 beta production; and protein-containing complex assembly. Acts upstream of or within cellular response to extracellular stimulus. Located in cytosol; extracellular space; and plasma membrane. Part of NLRP3 inflammasome complex. Is expressed in several structures, including gut; liver; lung; metanephros; and spleen. Orthologous to human GSDMD (gasdermin D).

Recommended Dilutions

WB 1:500 - 1:1000

Immunogen Information

Gene ID

79792

Swiss Prot

P57764

Immunogen

A synthetic peptide corresponding to a sequence within amino acids 200-300 of human Cleaved GSDMD (NP_081236.1).

Synonyms

DF5L; M2-4; Dfna5l; GsdmD-1; Gsdmdc1; 1810036L03Rik

Contact

☎ | 400-999-6126

✉ | cn.market@abclonal.com.cn

🌐 | www.abclonal.com.cn

Product Information

Source

Rabbit

Isotype

IgG

Purification

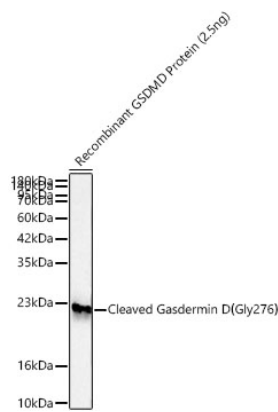
Affinity purification

Storage

Store at -20°C. Avoid freeze / thaw cycles.

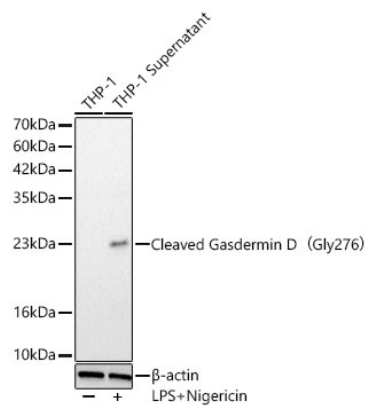
Buffer: PBS with 0.05% proclin300, 50% glycerol, pH7.3.

Validation Data



Western blot analysis of recombinant GSDMD Protein using Cleaved Gasdermin D (Gly276) Rabbit pAb (A24041) at 1:1000 dilution.
Secondary antibody: HRP Goat Anti-Rabbit IgG (H+L) (AS014) at 1:10000 dilution.
Lysates/proteins: 2.5 ng per lane.
Blocking buffer: 3% nonfat dry milk in TBST.
Detection: ECL Basic Kit (RM00020).
Exposure time: 60s.

WB samples for antibody validation are kindly provided by Dr. Feng Shao, NIBS



Western blot analysis of lysates from THP-1 cells using Cleaved Gasdermin D (Gly276) Rabbit pAb (A24041) at 1:1000 dilution. THP-1 cells were treated by LPS and Nigericin.
Secondary antibody: HRP Goat Anti-Rabbit IgG (H+L) (AS014) at 1:10000 dilution.
Lysates/proteins: 25 µg per lane.
Blocking buffer: 3% nonfat dry milk in TBST.
Detection: ECL Basic Kit (RM00020).
Exposure time: 180s.

WB samples for antibody validation are kindly provided by Dr. Feng Shao, NIBS