

LAT2 Rabbit pAb

Catalog No.: A24043

Basic Information

Observed MW

72kDa

Calculated MW

58kDa

Category

Primary antibody

Applications

ELISA, WB, IHC-P

Cross-Reactivity

Human, Mouse, Rat

Background

Enables several functions, including neutral amino acid transmembrane transporter activity; thyroid hormone transmembrane transporter activity; and toxin transmembrane transporter activity. Involved in L-alanine import across plasma membrane; L-leucine import across plasma membrane; and thyroid hormone transport. Located in plasma membrane. Part of basolateral plasma membrane and microvillus membrane.

Recommended Dilutions

WB	1:500 - 1:1000
IHC-P	1:50 - 1:200

Immunogen Information

Gene ID

23428

Swiss Prot

Q9UHI5

Immunogen

A synthetic peptide corresponding to a sequence within amino acids 201-300 of human SLC7A8 (NP_036376.2).

Synonyms

LAT2; LPI-PC1

Contact

 | 400-999-6126

 | cn.market@abclonal.com.cn

 | www.abclonal.com.cn

Product Information

Source

Rabbit

Isotype

IgG

Purification

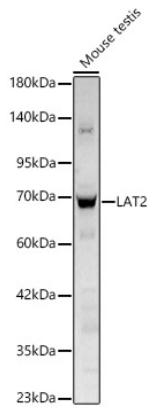
Affinity purification

Storage

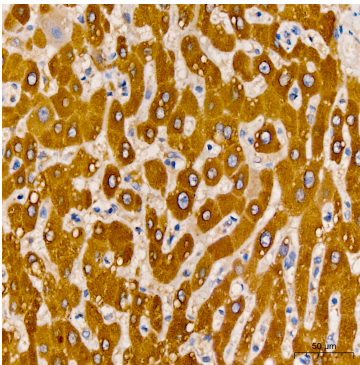
Store at -20°C. Avoid freeze / thaw cycles.

Buffer: PBS with 0.01% thimerosal, 50% glycerol, pH7.3.

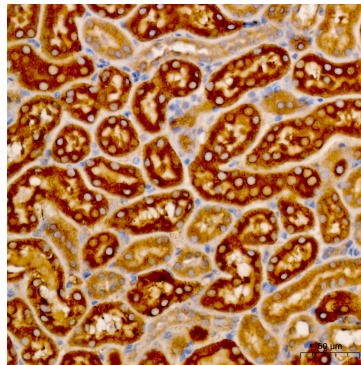
Validation Data



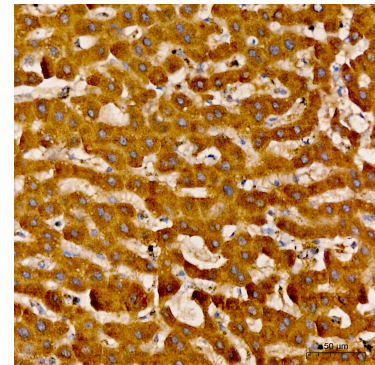
Western blot analysis of lysates from Mouse testis using LAT2 Rabbit pAb(A24043) at 1:1000 dilution.
Secondary antibody: HRP Goat Anti-Rabbit IgG (H+L) (AS014) at 1:10000 dilution.
Lysates/proteins: 25 µg per lane.
Blocking buffer: 3% nonfat dry milk in TBST.
Detection: ECL Basic Kit (RM00020).
Exposure time: 60s.



Immunohistochemistry analysis of LAT2 in paraffin-embedded Human liver tissue using LAT2 Rabbit pAb (A24043) at a dilution of 1:200 (40x lens). High pressure antigen retrieval performed with 0.01M Citrate Buffer(pH 6.0) prior to IHC staining.



Immunohistochemistry analysis of LAT2 in paraffin-embedded Mouse kidney tissue using LAT2 Rabbit pAb (A24043) at a dilution of 1:200 (40x lens). High pressure antigen retrieval performed with 0.01M Citrate Buffer(pH 6.0) prior to IHC staining.



Immunohistochemistry analysis of LAT2 in paraffin-embedded Rat liver tissue using LAT2 Rabbit pAb (A24043) at a dilution of 1:200 (40x lens). High pressure antigen retrieval performed with 0.01M Citrate Buffer(pH 6.0) prior to IHC staining.