

Cleaved IL-18 (Tyr37) Rabbit mAb

Catalog No.: A24057 **Recombinant**

Basic Information

Observed MW

18KDa

Calculated MW

22KDa

Category

Primary antibody

Applications

WB

Cross-Reactivity

Human

CloneNo number

ARC64645

Background

The protein encoded by this gene is a proinflammatory cytokine of the IL-1 family that is constitutively found as a precursor within the cytoplasm of a variety of cells including macrophages and keratinocytes. The inactive IL-18 precursor is processed to its active form by caspase-1, and is capable of stimulating interferon gamma production, and of regulating both T helper (Th) 1 and Th2 responses. This cytokine has been implicated in the injury of different organs, and in potentially fatal conditions characterized by a cytokine storm. In humans, IL-18 gene is located on chromosome 11. Alternatively spliced transcript variants encoding different isoforms have been found for this gene.

Recommended Dilutions

WB 1:1000 - 1:2000

Immunogen Information

Gene ID

3606

Swiss Prot

Q14116

Immunogen

A synthetic peptide corresponding to residues surrounding Tyr37 of human IL18 (NP_001553.1).

Synonyms

mature IL-18; Cleaved IL-18 (Tyr37)

Contact

☎ | 400-999-6126

✉ | cn.market@abclonal.com.cn

🌐 | www.abclonal.com.cn

Product Information

Source

Rabbit

Isotype

IgG

Purification

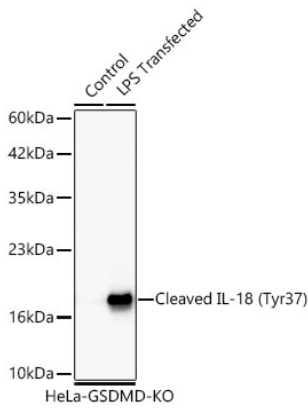
Affinity purification

Storage

Store at -20°C. Avoid freeze / thaw cycles.

Buffer: PBS with 0.09% Sodium azide, 0.05% BSA, 50% glycerol, pH7.3.

Validation Data



Western blot analysis of lysates from GSDMD knockout (KO) HeLa cells and GSDMD knockout (KO) HeLa cells transfected with LPS using Cleaved IL-18 (Tyr37) Rabbit mAb (A24057) at 1:1000 dilution incubated overnight at 4°C.

Secondary antibody: HRP-conjugated Goat anti-Rabbit IgG (H+L) (AS014) at 1:10000 dilution.

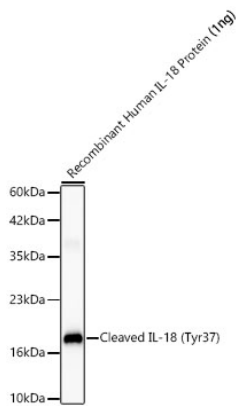
Lysates/proteins: 25 µg per lane.

Blocking buffer: 3% nonfat dry milk in TBST.

Detection: ECL Basic Kit (RM00020).

Exposure time:60s.

WB samples for antibody validation are kindly provided by Dr. Feng Shao, NIBS



Western blot analysis of Recombinant Human IL-18 Protein (RP00006) using Cleaved IL-18 (Tyr37) Rabbit mAb (A24057) at 1:1000 dilution incubated overnight at 4°C.

Secondary antibody: HRP-conjugated Goat anti-Rabbit IgG (H+L) (AS014) at 1:10000 dilution.

Lysates/proteins: 1 ng per lane.

Blocking buffer: 3% nonfat dry milk in TBST.

Detection: ECL Basic Kit (RM00020).

Exposure time: 60s.