

# [KO Validated] $\beta$ III-Tubulin Rabbit mAb

Catalog No.: A24067 **KO Validated** **Recombinant**

## Basic Information

### Observed MW

55kDa

### Calculated MW

50kDa

### Category

Primary antibody

### Applications

ELISA, WB, IHC-P, IF/ICC, IP

### Cross-Reactivity

Human, Mouse

### CloneNo number

ARC63789

## Background

This gene encodes a class III member of the beta tubulin protein family. Beta tubulins are one of two core protein families (alpha and beta tubulins) that heterodimerize and assemble to form microtubules. This protein is primarily expressed in neurons and may be involved in neurogenesis and axon guidance and maintenance. Mutations in this gene are the cause of congenital fibrosis of the extraocular muscles type 3. Alternate splicing results in multiple transcript variants. A pseudogene of this gene is found on chromosome 6.

## Recommended Dilutions

<b>WB</b>	1:3000 - 1:20000
<b>IHC-P</b>	1:50 - 1:200
<b>IF/ICC</b>	1:50 - 1:200
<b>IP</b>	0.5 $\mu$ g-4 $\mu$ g antibody for 200 $\mu$ g-400 $\mu$ g extracts of whole cells

## Contact

 | 400-999-6126

 | [cn.market@abclonal.com.cn](mailto:cn.market@abclonal.com.cn)

 | [www.abclonal.com.cn](http://www.abclonal.com.cn)

## Immunogen Information

### Gene ID

10381

### Swiss Prot

Q13509

### Immunogen

A synthetic peptide corresponding to a sequence within amino acids 351-450 of  $\beta$ III-Tubulin (NP\_006077.2).

### Synonyms

CDCBM; FEOM3; TUBB4; CDCBM1; CFEOM3; beta-4; CFEOM3A; in

## Product Information

### Source

Rabbit

### Isotype

IgG

### Purification

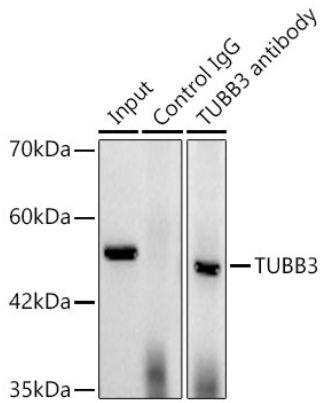
Affinity purification

### Storage

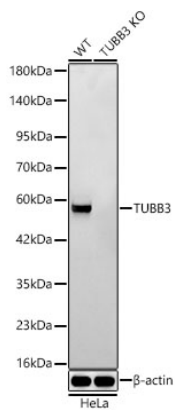
Store at -20°C. Avoid freeze / thaw cycles.

Buffer: PBS with 0.05% proclin300, 0.05% BSA, 50% glycerol, pH7.3.

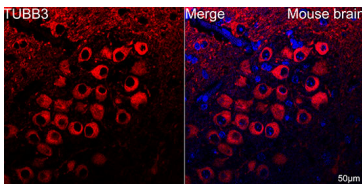
## Validation Data



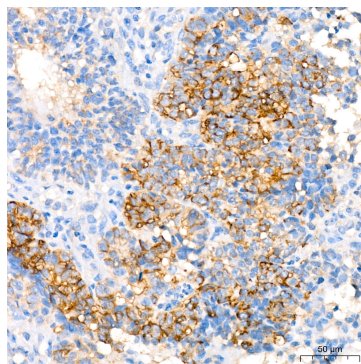
Immunoprecipitation of βIII-Tubulin in 300 μg extracts from HeLa cells using 3 μg [KO Validated] βIII-Tubulin Rabbit mAb (A24067). Western blot analysis was performed using [KO Validated] βIII-Tubulin Rabbit mAb (A24067) at 1:3000 dilution.



Western blot analysis of lysates from wild type (WT) and βIII-Tubulin knockout (KO) HeLa cells using [KO Validated] βIII-Tubulin Rabbit mAb (A24067) at 1:3000 dilution. Secondary antibody: HRP Goat Anti-Rabbit IgG (H+L) (AS014) at 1:10000 dilution. Lysates/proteins: 25 μg per lane. Blocking buffer: 3% nonfat dry milk in TBST. Detection: ECL Basic Kit (RM00020). Exposure time: 20s.



Confocal imaging of paraffin-embedded mouse brain using [KO Validated] βIII-Tubulin Rabbit mAb (A24067, dilution 1:200) followed by a further incubation with Cy3 Goat Anti-Rabbit IgG (H+L) (AS007, dilution 1:500) (Red). DAPI was used for nuclear staining (Blue). Objective: 40x. Perform high pressure antigen retrieval with 0.01 M citrate buffer (pH 6.0) prior to IF staining.



Immunohistochemistry analysis of βIII-Tubulin in paraffin-embedded human endometrium cancer tissue using [KO Validated] βIII-Tubulin Rabbit mAb (A24067) at a dilution of 1:200 (40x lens). High pressure antigen retrieval was performed with 0.01 M citrate buffer (pH 6.0) prior to IHC staining.