

# [KO Validated] PCIF1 Rabbit mAb

Catalog No.: A24070 **KO** **Validated** **Recombinant**

## Basic Information

### Observed MW

81kDa/80KD

### Calculated MW

81kDa

### Category

Primary antibody

### Applications

ELISA, WB, IHC-P, IP

### Cross-Reactivity

Human, Mouse, Rat

### CloneNo number

ARC64786

## Background

Enables RNA polymerase II C-terminal domain phosphoserine binding activity; S-adenosyl-L-methionine binding activity; and mRNA (2'-O-methyladenosine-N6-)-methyltransferase activity. Involved in mRNA methylation; negative regulation of translation; and positive regulation of translation. Located in intercellular bridge; microtubule cytoskeleton; and nucleoplasm.

## Recommended Dilutions

**WB** 1:500 - 1:1000

**IHC-P** 1:50 - 1:200

**IP** 0.5µg-4µg antibody for  
200µg-400µg extracts of  
whole cells

## Immunogen Information

### Gene ID

63935

### Swiss Prot

Q9H4Z3

### Immunogen

Recombinant fusion protein containing a sequence corresponding to amino acids 1-200 of human PCIF1(NP\_071387.1).

### Synonyms

CAPAM; hCAPAM; hPCIF1; C20orf67; PPP1R121; F1

## Contact

 | 400-999-6126

 | [cn.market@abclonal.com.cn](mailto:cn.market@abclonal.com.cn)

 | [www.abclonal.com.cn](http://www.abclonal.com.cn)

## Product Information

### Source

Rabbit

### Isotype

IgG

### Purification

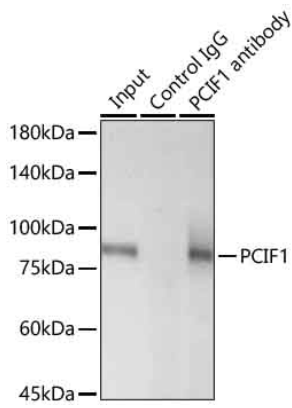
Affinity purification

### Storage

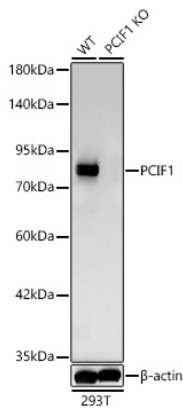
Store at -20°C. Avoid freeze / thaw cycles.

Buffer: PBS with 0.05% proclin300, 0.05% BSA, 50% glycerol, pH7.3.

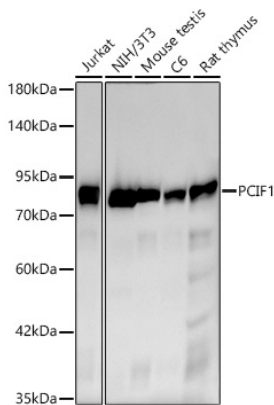
## Validation Data



Immunoprecipitation of PCIF1 from 200 µg extracts of NIH/3T3 cells was performed using 0.5 µg of [KO Validated] PCIF1 Rabbit mAb (A24070). Rabbit IgG isotype control (AC005) was used to precipitate the Control IgG sample. IP samples were eluted with 1X Laemmli Buffer. The Input lane represents 10% of the total input. Western blot analysis of immunoprecipitates was conducted using [KO Validated] PCIF1 Rabbit mAb (A24070) at a dilution of 1:1000.

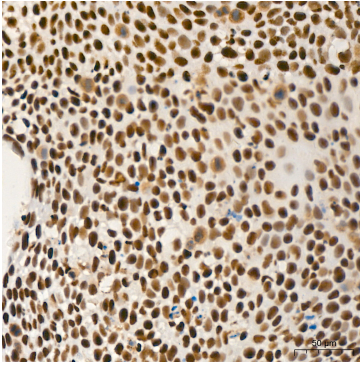


Western blot analysis of lysates from wild type (WT) and PCIF1 knockout (KO) 293T cells (RM01804) using [KO Validated] PCIF1 Rabbit mAb (A24070) at 1:1000 dilution. Secondary antibody: HRP-conjugated Goat anti-Rabbit IgG (H+L) (AS014) at 1:10000 dilution. Lysates/proteins: 25 µg per lane. Blocking buffer: 3% nonfat dry milk in TBST. Detection: ECL Basic Kit (RM00020). Exposure time: 45s.

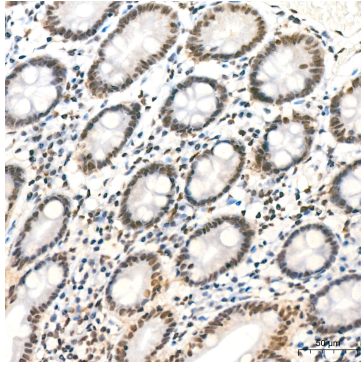


Western blot analysis of various lysates using [KO Validated] PCIF1 Rabbit mAb (A24070) at 1:1000 dilution. Secondary antibody: HRP-conjugated Goat anti-Rabbit IgG (H+L) (AS014) at 1:10000 dilution. Lysates / proteins: 25 µg per lane. Blocking buffer: 3 % nonfat dry milk in TBST. Detection: ECL Basic Kit (RM00020). Exposure time: 45s.

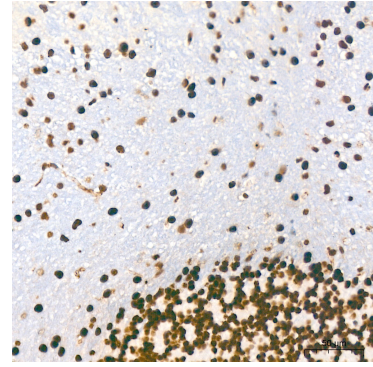
## Validation Data



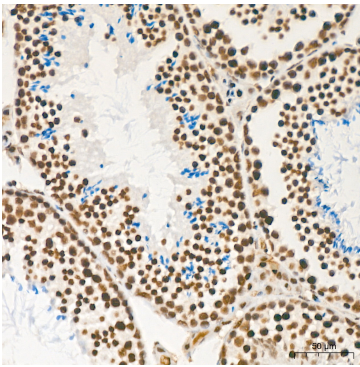
Immunohistochemistry analysis of paraffin-embedded Human cervix cancer tissue using [KO Validated] PCIF1 Rabbit mAb (A24070) at a dilution of 1:200 (40x lens). High pressure antigen retrieval performed with 0.01M Citrate Bufferr (pH 6.0) prior to IHC staining.



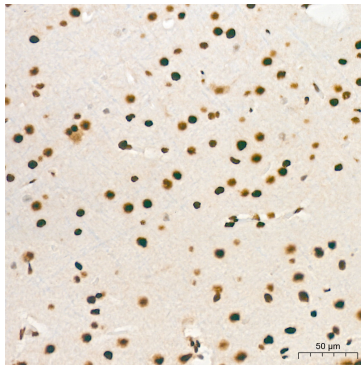
Immunohistochemistry analysis of paraffin-embedded Human colon tissue using [KO Validated] PCIF1 Rabbit mAb (A24070) at a dilution of 1:200 (40x lens). High pressure antigen retrieval performed with 0.01M Citrate Bufferr (pH 6.0) prior to IHC staining.



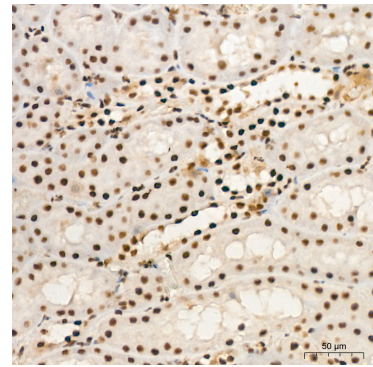
Immunohistochemistry analysis of paraffin-embedded Mouse brain tissue using [KO Validated] PCIF1 Rabbit mAb (A24070) at a dilution of 1:200 (40x lens). High pressure antigen retrieval performed with 0.01M Citrate Bufferr (pH 6.0) prior to IHC staining.



Immunohistochemistry analysis of paraffin-embedded Mouse testis tissue using [KO Validated] PCIF1 Rabbit mAb (A24070) at a dilution of 1:200 (40x lens). High pressure antigen retrieval performed with 0.01M Citrate Bufferr (pH 6.0) prior to IHC staining.



Immunohistochemistry analysis of paraffin-embedded Rat brain tissue using [KO Validated] PCIF1 Rabbit mAb (A24070) at a dilution of 1:200 (40x lens). High pressure antigen retrieval performed with 0.01M Citrate Bufferr (pH 6.0) prior to IHC staining.



Immunohistochemistry analysis of paraffin-embedded Rat kidney tissue using [KO Validated] PCIF1 Rabbit mAb (A24070) at a dilution of 1:200 (40x lens). High pressure antigen retrieval performed with 0.01M Citrate Bufferr (pH 6.0) prior to IHC staining.