

# FcγRI/CD64 Rabbit mAb

Catalog No.: A24082 **Recombinant**

## Basic Information

### Observed MW

45kDa

### Calculated MW

44kDa

### Category

Primary antibody

### Applications

ELISA, WB, FC

### Cross-Reactivity

Human, Mouse

### CloneNo number

ARC61141

## Background

Enables IgG binding activity and IgG receptor activity. Acts upstream of or within several processes, including antibody-dependent cellular cytotoxicity; endocytosis; and positive regulation of hypersensitivity. Located in external side of plasma membrane. Is expressed in liver. Orthologous to several human genes including FCGR1A (Fc gamma receptor 1a).

## Recommended Dilutions

**WB** 1:500 - 1:1000

**FC** 1:500 - 1:1000

## Immunogen Information

### Gene ID

14129

### Swiss Prot

P26151

### Immunogen

Recombinant Protein corresponding to a sequence within amino acids 25-297 of mouse FcγRI/CD64 (NP\_034316.1).

### Synonyms

CD64; IGGH AFC; FcγRI; FcγRI/CD64

## Contact

☎ | 400-999-6126

✉ | [cn.market@abclonal.com.cn](mailto:cn.market@abclonal.com.cn)

🌐 | [www.abclonal.com.cn](http://www.abclonal.com.cn)

## Product Information

### Source

Rabbit

### Isotype

IgG

### Purification

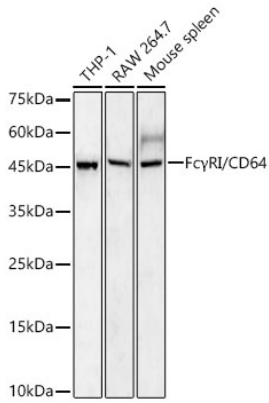
Affinity purification

### Storage

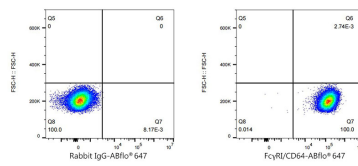
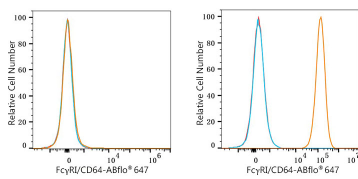
Store at -20°C. Avoid freeze / thaw cycles.

Buffer: PBS with 0.05% proclin300, 0.05% BSA, 50% glycerol, pH7.3.

## Validation Data



Western blot analysis of various lysates using FcγRI/CD64 Rabbit mAb (A24082) at 1:1000 dilution.  
 Secondary antibody: HRP-conjugated Goat anti-Rabbit IgG (H+L) (AS014) at 1:10000 dilution.  
 Lysates / proteins: 25 μg per lane.  
 Blocking buffer: 3 % nonfat dry milk in TBST.  
 Detection: ECL Basic Kit (RM00020).  
 Exposure time: 180s.



Flow cytometry:  $1 \times 10^6$  BALB/C mouse splenocyte (negative control, left) and RAW 264.7 cells (right) were surface-stained with FcγRI/CD64 Rabbit mAb (A24082, 2 μg/mL, orange line) or ABflo® 647 Rabbit IgG isotype control (A22070, 2 μl/Test, blue line), followed by Alexa Fluor® 647 conjugated goat anti-rabbit pAb staining. Non-fluorescently stained cells were used as blank control (red line).

Flow cytometry:  $1 \times 10^6$  RAW 264.7 cells were surface-stained with ABflo® 647 Rabbit IgG isotype control (A22070, 2 μl/Test, left) or FcγRI/CD64 Rabbit mAb (A24082, 2 μg/mL, right).