

CD152/CTLA-4 Rabbit mAb

Catalog No.: A24085 **Recombinant**

Basic Information

Observed MW

25kDa

Calculated MW

6kDa/8kDa/19kDa/24kDa

Category

Primary antibody

Applications

WB,FC,ELISA

Cross-Reactivity

Human

CloneNo number

ARC57384

Background

This gene is a member of the immunoglobulin superfamily and encodes a protein which transmits an inhibitory signal to T cells. The protein contains a V domain, a transmembrane domain, and a cytoplasmic tail. Alternate transcriptional splice variants, encoding different isoforms, have been characterized. The membrane-bound isoform functions as a homodimer interconnected by a disulfide bond, while the soluble isoform functions as a monomer. Mutations in this gene have been associated with insulin-dependent diabetes mellitus, Graves disease, Hashimoto thyroiditis, celiac disease, systemic lupus erythematosus, thyroid-associated orbitopathy, and other autoimmune diseases.

Recommended Dilutions

WB 1:2000 - 1:10000

FC 1:500 - 1:1000

ELISA Recommended starting concentration is 1 µg/mL. Please optimize the concentration based on your specific assay requirements.

Immunogen Information

Gene ID

1493

Swiss Prot

P16410

Immunogen

Recombinant fusion protein containing a sequence corresponding to amino acids 37-162 of human CD152/CTLA-4 (NP_005205.2).

Synonyms

CD; GSE; GRD4; ALPS5; CD152; CTLA-4; IDDM12; CELIAC3; CD152/CTLA-4

Contact

☎ | 400-999-6126

✉ | cn.market@abclonal.com.cn

🌐 | www.abclonal.com.cn

Product Information

Source

Rabbit

Isotype

IgG

Purification

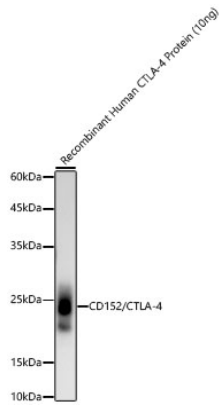
Affinity purification

Storage

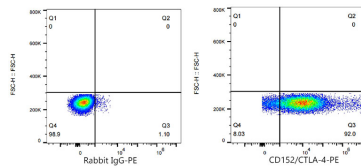
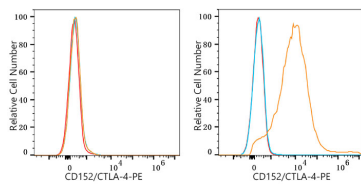
Store at -20°C. Avoid freeze / thaw cycles.

Buffer: PBS with 0.05% proclin300,0.05% BSA,50% glycerol,pH7.3.

Validation Data



Western blot analysis of Recombinant Human CTLA-4/CD152 Protein (RP01044) using CD152/CTLA-4 Rabbit mAb (A24085) at 1:9000 dilution.
 Secondary antibody: HRP-conjugated Goat anti-Rabbit IgG (H+L) (AS014) at 1:10000 dilution.
 Lysates/proteins: 10ng per lane.
 Blocking buffer: 3% nonfat dry milk in TBST.
 Detection: ECL Enhanced Kit (RM00021).
 Exposure time: 60s.



Flow cytometry: 1×10^6 293F cells (negative control, left) and 293F (Transfection, right) cells were surface-stained with CD152/CTLA-4 Rabbit mAb (A24085, 2 $\mu\text{g}/\text{mL}$, orange line) or PE Rabbit IgG isotype control (5 $\mu\text{l}/\text{Test}$, blue line), followed by PE conjugated Donkey anti-rabbit Antibody staining. Non-fluorescently stained cells were used as blank control (red line).

Flow cytometry: 1×10^6 293F (Transfection) cells were surface-stained with PE Rabbit IgG isotype control (5 $\mu\text{l}/\text{Test}$, left) or CD152/CTLA-4 Rabbit mAb (A24085, 2 $\mu\text{g}/\text{mL}$, right).