

CD54 Rabbit mAb

Catalog No.: A24087 **Recombinant**

Basic Information

Observed MW

82-100kDa

Calculated MW

59kDa

Category

Primary antibody

Applications

ELISA, WB, IHC-P, FC

Cross-Reactivity

Mouse, Rat

CloneNo number

ARC63603

Background

This gene encodes an integral membrane protein that binds leukocyte adhesion protein LFA-1. It participates in the innate immune response.

Recommended Dilutions

WB	1:500 - 1:1000
IHC-P	1:50 - 1:200
FC	1:500 - 1:1000

Immunogen Information

Gene ID

15894

Swiss Prot

P13597

Immunogen

Recombinant fusion protein containing a sequence corresponding to aminoacids 28-485 of mouse ICAM-1/CD54(NP_034623.1).

Synonyms

CD54; Ly-47; Icam-1; MALA-2

Contact

	400-999-6126
	cn.market@abclonal.com.cn
	www.abclonal.com.cn

Product Information

Source

Rabbit

Isotype

IgG

Purification

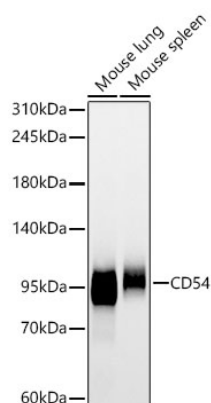
Affinity purification

Storage

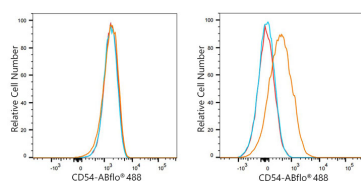
Store at -20°C. Avoid freeze / thaw cycles.

Buffer: PBS with 0.05% proclin300, 0.05% BSA, 50% glycerol, pH7.3.

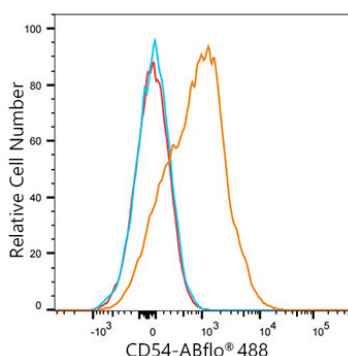
Validation Data



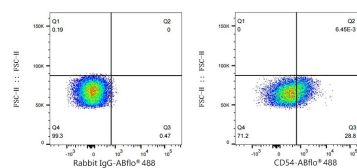
Western blot analysis of various lysates using CD54 Rabbit mAb (A24087) at 1:1000 dilution.
Secondary antibody: HRP Goat Anti-Rabbit IgG (H+L) (AS014) at 1:10000 dilution.
Lysates/proteins: 25 µg per lane.
Blocking buffer: 3 % nonfat dry milk in TBST.
Detection: ECL Basic Kit (RM00020).
Exposure time: 90s.



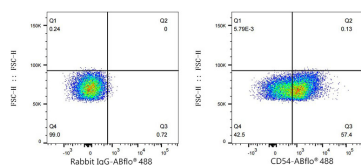
Flow cytometry: 1×10^6 C2C12 cells (negative control, left) and Mouse thymocytes (right) were surface-stained with CD54 Rabbit mAb (A24087, 2 µg/mL, orange line) or ABflo® 488 Rabbit IgG isotype control (A22069, 5 µl/Test, blue line), followed by FITC conjugated goat anti-Rabbit pAb staining. Non-fluorescently stained cells were used as blank control (red line).



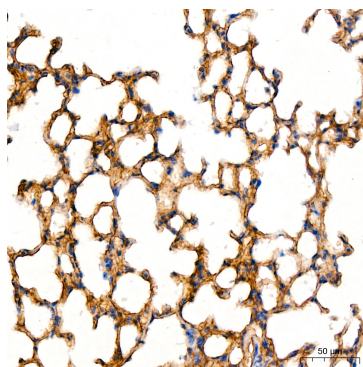
Flow cytometry: 1×10^6 Rat spleen cells were surface-stained with CD54 Rabbit mAb (A24087, 2 µg/mL, orange line) or ABflo® 488 Rabbit IgG isotype control (A22069, 5 µl/Test, blue line), followed by FITC conjugated goat anti-Rabbit pAb staining. Non-fluorescently stained rat spleen cells were used as blank control (red line).



Flow cytometry: 1×10^6 Mouse thymocytes were surface-stained with ABflo® 488 Rabbit IgG isotype control (A22069, 5 µl/Test, left) or CD54 Rabbit mAb (A24087, 2 µg/mL, right).



Flow cytometry: 1×10^6 Rat spleen cells were surface-stained with ABflo® 488 Rabbit IgG isotype control (A22069, 5 µl/Test, left) or CD54 Rabbit mAb (A24087, 2 µg/mL, right).



Immunohistochemistry analysis of CD54 in paraffin-embedded Mouse lung tissue using CD54 Rabbit mAb (A24087) at a dilution of 1:200 (40x lens). High pressure antigen retrieval was performed with 0.01 M citrate buffer (pH 6.0) prior to IHC staining.