

# ABflo® 405 Rabbit anti-Human IgD mAb

Catalog No.: A24093

## Basic Information

### Observed MW

### Calculated MW

47kDa

### Category

Primary antibody

### Applications

FC

### Cross-Reactivity

Human

### CloneNo number

ARC60051-ABflo405

### Conjugate

ABflo® 405. Ex:403nm. Em:427nm.

## Background

IgD is the major antigen receptor isotype on the surface of most peripheral B-cells, where it is coexpressed with IgM. The membrane-bound IgD (mIgD) induces the phosphorylation of CD79A and CD79B by the Src family of protein tyrosine kinases.

## Recommended Dilutions

FC 5 µl per 10<sup>6</sup> cells in  
100 µl volume

## Immunogen Information

### Gene ID

3495

### Swiss Prot

P01880

### Immunogen

Recombinant fusion protein containing a sequence corresponding to amino acids 99-384 of human IgD.

### Synonyms

## Contact

☎ | 400-999-6126

✉ | [cn.market@abclonal.com.cn](mailto:cn.market@abclonal.com.cn)

🌐 | [www.abclonal.com.cn](http://www.abclonal.com.cn)

## Product Information

### Source

Rabbit

### Isotype

IgG

### Purification

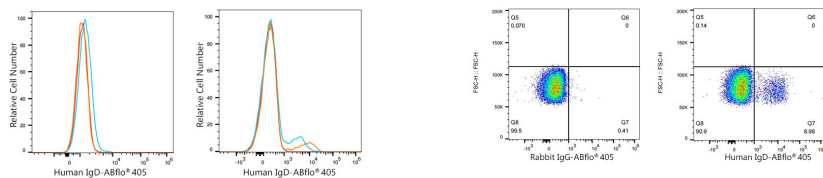
Affinity purification

### Storage

Store at 2-8°C. Avoid freeze.

Buffer: PBS with 0.03% proclin300,0.2% BSA,pH7.3.

## Validation Data



Flow cytometry:  $1 \times 10^6$  Jurkat cells (negative control, left) and Human PBMC (right) were surface-stained with ABflo® 405 Rabbit anti-Human IgD mAb (A24093, 5  $\mu$ l/Test, orange line) or ABflo® 405 Rabbit IgG isotype control (5  $\mu$ l/Test, blue line). Non-fluorescently stained cells were used as blank control (red line).

Flow cytometry:  $1 \times 10^6$  Human PBMC were surface-stained with ABflo® 405 Rabbit IgG isotype control (5  $\mu$ l/Test, left) or ABflo® 405 Rabbit anti-Human IgD mAb (A24093, 5  $\mu$ l/Test, right).