

# ABflo® 488 Rabbit anti-Mouse CD11b mAb

Catalog No.: A24094

## Basic Information

### Observed MW

### Calculated MW

127kDa

### Category

Primary antibody

### Applications

FC

### Cross-Reactivity

Mouse

### CloneNo number

ARC63899-ABflo488

### Conjugate

ABflo® 488. Ex:491nm. Em:516nm.

## Recommended Dilutions

FC 5 µl per 10<sup>6</sup> cells in  
100 µl volume

## Background

Enables complement component C3b binding activity; heparan sulfate proteoglycan binding activity; and heparin binding activity. Contributes to cargo receptor activity. Involved in several processes, including central nervous system development; endocytosis; and positive regulation of neuron death. Acts upstream of or within several processes, including activated T cell proliferation; leukocyte migration; and microglia development. Located in external side of plasma membrane and nucleus. Is integral component of membrane. Part of integrin alphaM-beta2 complex. Is expressed in several structures, including central nervous system; heart; lymphatic vessel; thymus; and yolk sac. Human ortholog(s) of this gene implicated in lupus nephritis. Orthologous to human ITGAM (integrin subunit alpha M).

## Immunogen Information

### Gene ID

16409

### Swiss Prot

P05555

### Immunogen

Recombinant fusion protein containing a sequence corresponding to amino acids 143-337 of mouse CD11b (NP\_032427.2).

### Synonyms

CR3; CR3A; MAC1; Cd11b; Ly-40; Mac-1; Mac-1a; CD11b/CD18; F730045J24Rik

## Contact

☎ | 400-999-6126

✉ | [cn.market@abclonal.com.cn](mailto:cn.market@abclonal.com.cn)

🌐 | [www.abclonal.com.cn](http://www.abclonal.com.cn)

## Product Information

### Source

Rabbit

### Isotype

IgG

### Purification

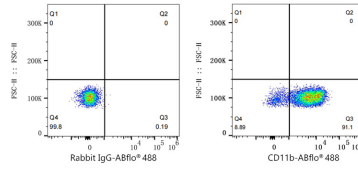
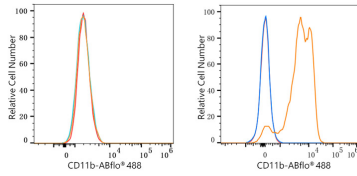
Affinity purification

### Storage

Store at 2-8°C. Avoid freeze.

Buffer: PBS with 0.03% proclin300,0.2% BSA,pH7.3.

## Validation Data



Flow cytometry: 1X10<sup>6</sup> C2C12 cells (negative control, left) and C57BL/6 mouse bone marrow cells (right) were surface-stained with ABflo® 488 Rabbit anti-Mouse CD11b mAb (A24094, 5 µl/Test, orange line) or ABflo® 488 Rabbit IgG isotype control (A22069, 5 µl/Test, blue line). Non-fluorescently stained cells were used as blank control (red line).

Flow cytometry: 1X10<sup>6</sup> C57BL/6 mouse bone marrow cells were surface-stained with ABflo® 488 Rabbit IgG isotype control (A22069, 5 µl/Test, left) or ABflo® 488 Rabbit anti-Mouse CD11b mAb (A24094, 5 µl/Test, right).