

# ABflo® 488 Rabbit anti-Human CD300c mAb

Catalog No.: A24097

## Basic Information

### Observed MW

### Calculated MW

25kDa

### Category

Primary antibody

### Applications

IF/ICC,FC

### Cross-Reactivity

Human

### CloneNo number

ARC64148-ABflo488

### Conjugate

ABflo® 488. Ex:491nm. Em:516nm.

## Recommended Dilutions

**IF/ICC** 1:50 - 1:200

**FC** 5 µl per 10<sup>6</sup> cells in  
100 µl volume

## Background

The CMRF35 antigen, which was identified by reactivity with a monoclonal antibody, is present on monocytes, neutrophils, and some T and B lymphocytes (Jackson et al., 1992 [PubMed 1349532]).

## Immunogen Information

### Gene ID

10871

### Swiss Prot

Q08708

### Immunogen

Recombinant fusion protein containing a sequence corresponding to amino acids 21-183 of human CD300C (NP\_006669.1).

### Synonyms

LIR; CLM-6; CMRF35; IGSF16; CMRF-35; CMRF35A; CMRF-35A; CMRF35A1; CMRF35-A1

## Contact

☎ | 400-999-6126

✉ | [cn.market@abclonal.com.cn](mailto:cn.market@abclonal.com.cn)

🌐 | [www.abclonal.com.cn](http://www.abclonal.com.cn)

## Product Information

### Source

Rabbit

### Isotype

IgG

### Purification

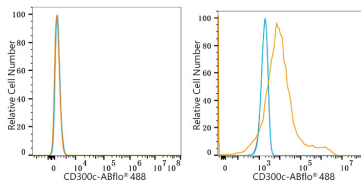
Affinity purification

### Storage

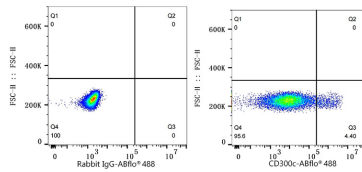
Store at 2-8°C. Avoid freeze.

Buffer: PBS with 0.03% proclin300,0.2% BSA,pH7.3.

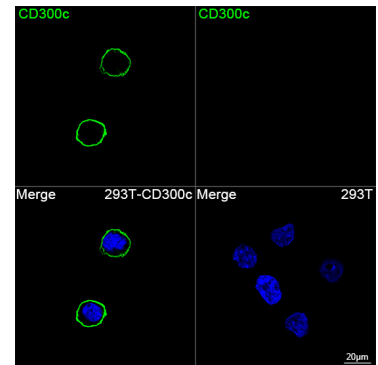
## Validation Data



Flow cytometry:  $1 \times 10^6$  293F cells (negative control, left) and 293F (Transfection, right) cells were surface-stained with ABflo® 488 Rabbit anti-Human CD300c mAb (A24097, 5  $\mu$ l/Test, orange line) or ABflo® 488 Rabbit IgG isotype control (A22069, 5  $\mu$ l/Test, blue line). Non-fluorescently stained cells were used as blank control (red line).



Flow cytometry:  $1 \times 10^6$  293F (Transfection) cells were surface-stained with ABflo® 488 Rabbit IgG isotype control (A22069, 5  $\mu$ l/Test, left) or ABflo® 488 Rabbit anti-Human CD300c mAb (A24097, 5  $\mu$ l/Test, right).



Confocal imaging of 293T cells transfected with CD300c using ABflo® 488 Rabbit anti-Human CD300c mAb (A24097, dilution 1:200). DAPI was used for nuclear staining (Blue). Objective: 100x.