

# ABflo® 647 Rabbit anti-Human CD300c mAb

Catalog No.: A24098

## Basic Information

### Observed MW

**Calculated MW**  
25kDa

**Category**  
Primary antibody

**Applications**  
IF/ICC,FC

**Cross-Reactivity**  
Human

**CloneNo number**  
ARC64148

**Conjugate**  
ABflo® 647. Ex:648nm. Em:664nm.

## Background

The CMRF35 antigen, which was identified by reactivity with a monoclonal antibody, is present on monocytes, neutrophils, and some T and B lymphocytes (Jackson et al., 1992 [PubMed 1349532]).

## Recommended Dilutions

<b>IF/ICC</b>	1:50 - 1:200
<b>FC</b>	5 µl per 10 <sup>6</sup> cells in 100 µl volume

## Immunogen Information

<b>Gene ID</b>	<b>Swiss Prot</b>
10871	Q08708

### Immunogen

Recombinant protein (or fragment). This information is considered to be commercially sensitive.

### Synonyms

LIR; CLM-6; CMRF35; IGSF16; CMRF-35; CMRF35A; CMRF-35A; CMRF35A1; CMRF35-A1

## Contact

	400-999-6126
	cn.market@abclonal.com.cn
	www.abclonal.com.cn

## Product Information

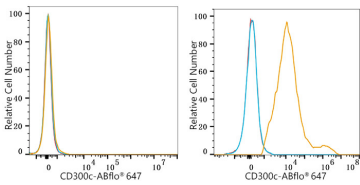
<b>Source</b>	<b>Isotype</b>	<b>Purification</b>
Rabbit	IgG	Affinity purification

### Storage

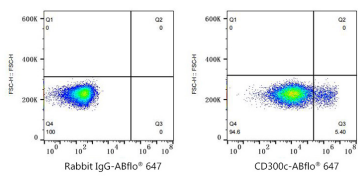
Store at 2-8°C. Avoid freeze.

Buffer: PBS containing 0.2% BSA, preserved with proclin300 or sodium azide (as specified on the Certificate of Analysis), pH 7.3.

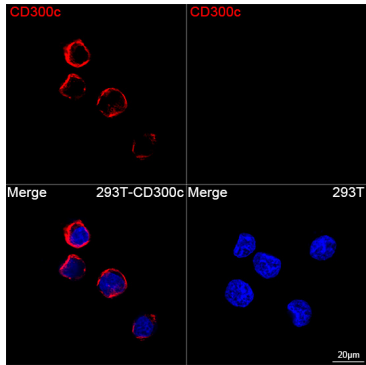
# Validation Data



Flow cytometry:  $1 \times 10^6$  293F cells (negative control, left) and 293F (Transfection, right) cells were surface-stained with ABflo® 647 Rabbit anti-Human CD300c mAb (A24098, 5  $\mu$ l/Test, orange line) or ABflo® 647 Rabbit IgG isotype control (A22070, 5  $\mu$ l/Test, blue line). Non-fluorescently stained cells were used as blank control (red line).



Flow cytometry:  $1 \times 10^6$  293F (Transfection) cells were surface-stained with ABflo® 647 Rabbit IgG isotype control (A22070, 5  $\mu$ l/Test, left) or ABflo® 647 Rabbit anti-Human CD300c mAb (A24098, 5  $\mu$ l/Test, right).



Confocal imaging of 293T cells transfected with CD300c using ABflo® 647 Rabbit anti-Human CD300c mAb (A24098, dilution 1:100). DAPI was used for nuclear staining (Blue). Objective: 100x.