

# PE Rabbit anti-Mouse CD161c/NK1.1 mAb

Catalog No.: A24107

## Basic Information

### Observed MW

### Calculated MW

25kDa

### Category

Primary antibody

### Applications

FC

### Cross-Reactivity

Mouse

### CloneNo number

ARC57668-PE

### Conjugate

PE. Ex:565nm. Em:574nm.

## Background

Enables identical protein binding activity and signaling receptor activity. Acts upstream of or within natural killer cell activation and positive regulation of natural killer cell mediated cytotoxicity. Located in external side of plasma membrane. Is integral component of plasma membrane. Is expressed in thymus primordium. Orthologous to human KLRB1 (killer cell lectin like receptor B1).

## Recommended Dilutions

FC 5  $\mu$ l per  $10^6$  cells in  
100  $\mu$ l volume

## Immunogen Information

### Gene ID

17059

### Swiss Prot

P27814

### Immunogen

Recombinant fusion protein containing a sequence corresponding to amino acids 67-223 of mouse CD161/NK1.1 (NP\_001153376.2).

### Synonyms

Nk1; Ly59; Nk-1; CD161; Ly-59; Ly55c; NK1.1; NKRP1; Nk1.2; Klrb1b; NK-RP1; Nk-1.2; Nkrp1b; Nkrp1c; ly-55c; NKRP140; NKR-P1.9

## Contact

 | 400-999-6126

 | [cn.market@abclonal.com.cn](mailto:cn.market@abclonal.com.cn)

 | [www.abclonal.com.cn](http://www.abclonal.com.cn)

## Product Information

### Source

Rabbit

### Isotype

IgG

### Purification

Affinity purification

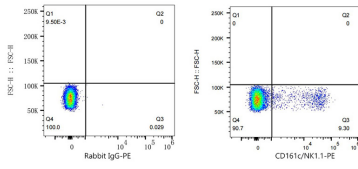
### Storage

Store at 2-8°C. Avoid freeze.

Buffer: PBS with 0.03% proclin300,0.2% BSA,pH7.3.

## Validation Data

---



Flow cytometry:  $1 \times 10^6$  C57BL/6 mouse Splenocytes were surface-stained with PE Rabbit IgG isotype control (5  $\mu$ l/Test, left) or PE Rabbit anti-Mouse CD161c/NK1.1 mAb (A24107, 5  $\mu$ l/Test, right).