

CD112/Nectin-2 Rabbit mAb

Catalog No.: A24108 **Recombinant**

Basic Information

Observed MW

Calculated MW

57kDa

Category

Primary antibody

Applications

ELISA,FC

Cross-Reactivity

Mouse

CloneNo number

ARC64537

Background

Enables cell adhesion molecule binding activity and protein homodimerization activity. Involved in homophilic cell adhesion via plasma membrane adhesion molecules. Acts upstream of or within several processes, including establishment of mitochondrion localization; sperm mitochondrion organization; and spermatid development. Located in cell-cell contact zone; plasma membrane; and zonula adherens. Is expressed in brain; cochlea; enamel organ; male reproductive system; and primitive collecting duct. Human ortholog(s) of this gene implicated in Alzheimer's disease and multiple sclerosis. Orthologous to human NECTIN2 (nectin cell adhesion molecule 2).

Recommended Dilutions

FC 1:500 - 1:1000

Immunogen Information

Gene ID

19294

Swiss Prot

P32507

Immunogen

Recombinant fusion protein containing a sequence corresponding to amino acids 32-345 of mouse CD112/Nectin-2 (NP_033016.3).

Synonyms

MPH; Pvr; Pvs; Cd112; Pvr12; nectin-2; CD112/Nectin-2

Contact

☎ | 400-999-6126

✉ | cn.market@abclonal.com.cn

🌐 | www.abclonal.com.cn

Product Information

Source

Rabbit

Isotype

IgG

Purification

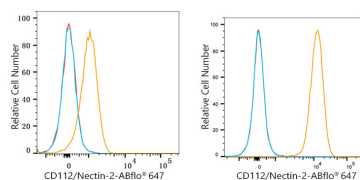
Affinity purification

Storage

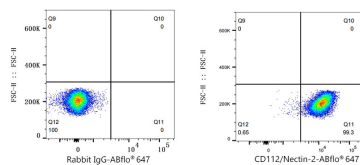
Store at -20°C. Avoid freeze / thaw cycles.

Buffer: PBS with 0.05% proclin300,0.05% BSA,50% glycerol,pH7.3.

Validation Data



Flow cytometry: 1×10^6 Raw264.7 cells (Low Expression, left) and C2C12 cells (right) were surface-stained with CD112/Nectin-2 Rabbit mAb (A24108,2 $\mu\text{g/mL}$, orange line) or ABflo® 647 Rabbit IgG isotype control (A22070,5 $\mu\text{L}/\text{Test}$, blue line), followed by Alexa Fluor® 647 conjugated goat anti-rabbit pAb staining. Non-fluorescently stained cells were used as blank control (red line).



Flow cytometry: 1×10^6 C2C12 cells were surface-stained with ABflo® 647 Rabbit IgG isotype control (A22070,5 $\mu\text{L}/\text{Test}$, left) or CD112/Nectin-2 Rabbit mAb (A24108,2 $\mu\text{g/mL}$, right).