

CD16 Rabbit mAb

Catalog No.: A24111 **Recombinant**

Basic Information

Observed MW

Calculated MW
30kDa

Category
Primary antibody

Applications
ELISA,FC

Cross-Reactivity
Mouse

CloneNo number
ARC64354

Background

Enables IgG binding activity and IgG receptor activity. Acts upstream of or within several processes, including antibody-dependent cellular cytotoxicity; phagocytosis; and positive regulation of hypersensitivity. Located in external side of plasma membrane. Is expressed in liver and spleen. Human ortholog(s) of this gene implicated in several diseases, including autoimmune disease (multiple); dengue disease (multiple); hematologic cancer (multiple); leukopenia (multiple); and malaria (multiple). Orthologous to human FCGR2A (Fc fragment of IgG receptor IIa).

Recommended Dilutions

FC 1:500 - 1:1000

Immunogen Information

Gene ID 14131	Swiss Prot A0A0B4J1M6
-------------------------	---------------------------------

Immunogen

Recombinant fusion protein containing a sequence corresponding to amino acids 38-207 of mouse CD16(NP_034318.2).

Synonyms
CD16; Cd16

Contact

☎	400-999-6126
✉	cn.market@abclonal.com.cn
🌐	www.abclonal.com.cn

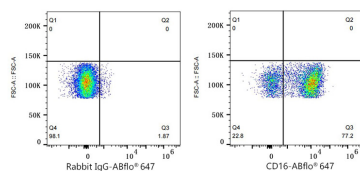
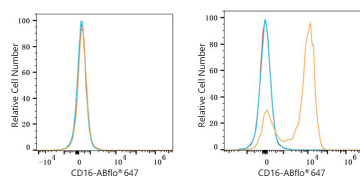
Product Information

Source Rabbit	Isotype IgG	Purification Affinity purification
-------------------------	-----------------------	--

Storage

Store at -20°C. Avoid freeze / thaw cycles.
Buffer: PBS with 0.05% proclin300,0.05% BSA,50% glycerol,pH7.3.

Validation Data



Flow cytometry: 1X10⁶ Neuro-2a cells (negative control, left) and C57BL/6 mouse Splenocytes (right) were surface-stained with CD16 Rabbit mAb (A24111, 2 µg/mL, orange line) or ABflo® 647 Rabbit IgG isotype control (A22070, 5 µl/test, blue line), followed by Alexa Fluor® 647 conjugated goat anti-rabbit pAb staining. Non-fluorescently stained cells were used as blank control (red line).

Flow cytometry: 1X10⁶ C57BL/6 mouse Splenocytes were surface-stained with ABflo® 647 Rabbit IgG isotype control (A22070, 5 µl/Test, left) or CD16 Rabbit mAb (A24111, 2 µg/mL).