

CFAP20/GTL3 Rabbit mAb

Catalog No.: A24115 **Recombinant**

Basic Information

Observed MW

23kDa

Calculated MW

23kDa

Category

Primary antibody

Applications

WB,IHC-P,ELISA

Cross-Reactivity

Human, Mouse, Rat

CloneNo number

ARC58773

Background

Enables RNA binding activity. Involved in several processes, including positive regulation of feeding behavior; protein polyglutamylation; and regulation of cell motility. Located in centriole; ciliary basal body; and nucleoplasm.

Recommended Dilutions

WB 1:2000 - 1:7000

IHC-P 1:200 - 1:800

ELISA Recommended starting concentration is 1 µg/mL. Please optimize the concentration based on your specific assay requirements.

Immunogen Information

Gene ID

29105

Swiss Prot

Q9Y6A4

Immunogen

A synthetic peptide corresponding to a sequence within amino acids 94-193 of human CFAP20/GTL3 (NP_037374.1).

Synonyms

GTL3; BUG22; EVORF; fSAP23; C16orf80; CFAP20/GTL3

Contact

 | 400-999-6126

 | cn.market@abclonal.com.cn

 | www.abclonal.com.cn

Product Information

Source

Rabbit

Isotype

IgG

Purification

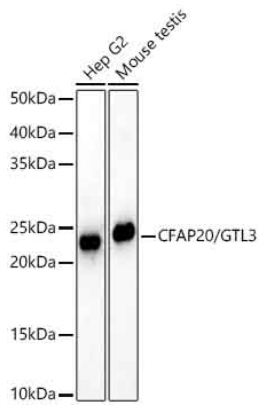
Affinity purification

Storage

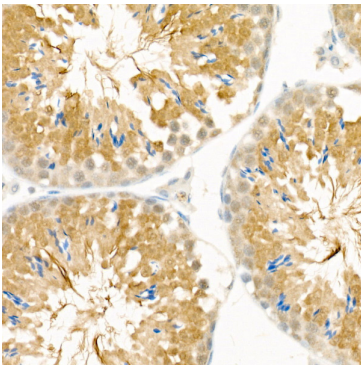
Store at -20°C. Avoid freeze / thaw cycles.

Buffer: PBS with 0.05% proclin300,0.05% BSA,50% glycerol,pH7.3.

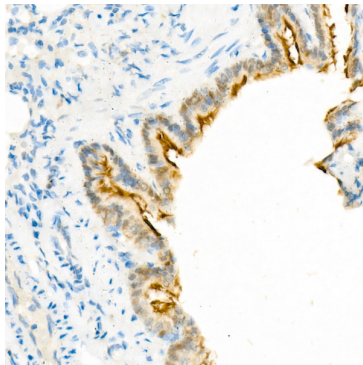
Validation Data



Western blot analysis of various lysates using CFAP20/GTL3 Rabbit mAb (A24115) at 1:6000 dilution.
Secondary antibody: HRP-conjugated Goat anti-Rabbit IgG (H+L) (AS014) at 1:10000 dilution.
Lysates / proteins: 25 µg per lane.
Blocking buffer: 3 % nonfat dry milk in TBST.
Detection: ECL Basic Kit (RM00020).
Exposure time: 90s.



Immunohistochemistry analysis of paraffin-embedded Mouse testis tissue using CFAP20/GTL3 Rabbit mAb (A24115) at a dilution of 1:300 (40x lens). High pressure antigen retrieval was performed with 0.01 M citrate buffer (pH 6.0) prior to IHC staining.



Immunohistochemistry analysis of paraffin-embedded Rat bronchus tissue using CFAP20/GTL3 Rabbit mAb (A24115) at a dilution of 1:300 (40x lens). High pressure antigen retrieval was performed with 0.01 M citrate buffer (pH 6.0) prior to IHC staining.