

REST/NRSF Rabbit mAb

Catalog No.: A2415 **Recombinant**

Basic Information

Observed MW

170kDa

Calculated MW

122kDa

Category

Primary antibody

Applications

ELISA, WB, IP

Cross-Reactivity

Human, Mouse, Rat

CloneNo number

ARC0755

Background

This gene was initially identified as a transcriptional repressor that represses neuronal genes in non-neuronal tissues. However, depending on the cellular context, this gene can act as either an oncogene or a tumor suppressor. The encoded protein is a member of the Kruppel-type zinc finger transcription factor family. It represses transcription by binding a DNA sequence element called the neuron-restrictive silencer element. The protein is also found in undifferentiated neuronal progenitor cells and it is thought that this repressor may act as a master negative regulator of neurogenesis. Alternatively spliced transcript variants have been described.

Recommended Dilutions

WB 1:500 - 1:1000**IP** 0.5µg-4µg antibody for
200µg-400µg extracts of
whole cells

Immunogen Information

Gene ID

5978

Swiss Prot

Q13127

Immunogen

A synthetic peptide corresponding to a sequence within amino acids 100-200 of human REST/NRSF (Q13127).

Synonyms

WT6; XBR; HGF5; NRSF; DFNA27; GINGF5; REST/NRSF

Contact

 | 400-999-6126 | cn.market@abclonal.com.cn | www.abclonal.com.cn

Product Information

Source

Rabbit

Isotype

IgG

Purification

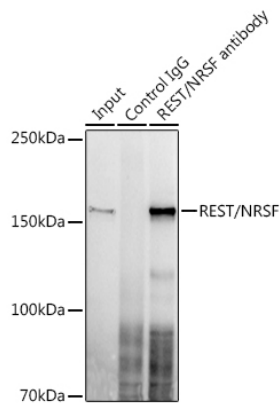
Affinity purification

Storage

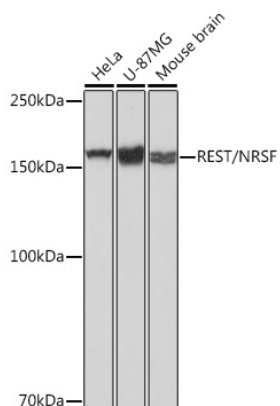
Store at -20°C. Avoid freeze / thaw cycles.

Buffer: PBS with 0.02% sodium azide, 0.05% BSA, 50% glycerol, pH7.3.

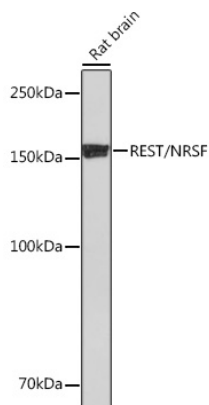
Validation Data



Immunoprecipitation analysis of 300 µg extracts of U-87MG cells using 3 µg REST/NRSF antibody (A2415). Western blot was performed from the immunoprecipitate using REST/NRSF antibody (A2415) at a dilution of 1:1000.



Western blot analysis of various lysates using REST/NRSF Rabbit mAb (A2415) at 1 µg/1000 dilution. Secondary antibody: HRP Goat Anti-Rabbit IgG (H+L) (AS014) at 1:10000 dilution. Lysates/proteins: 25µg per lane. Blocking buffer: 3% nonfat dry milk in TBST. Detection: ECL Basic Kit (RM00020). Exposure time: 1s.



Western blot analysis of lysates from Rat brain, using REST/NRSF Rabbit mAb (A2415) at 1 µg/1000 dilution. Secondary antibody: HRP Goat Anti-Rabbit IgG (H+L) (AS014) at 1:10000 dilution. Lysates/proteins: 25µg per lane. Blocking buffer: 3% nonfat dry milk in TBST. Detection: ECL Basic Kit (RM00020). Exposure time: 90s.