

# ABflo® 488 Rabbit anti-Mouse CD138/Syndecan-1 mAb

Catalog No.: A24153

## Basic Information

### Observed MW

### Calculated MW

33kDa

### Category

Primary antibody

### Applications

FC

### Cross-Reactivity

Mouse

### CloneNo number

ARC66008

### Conjugate

ABflo® 488. Ex:491nm. Em:516nm.

## Recommended Dilutions

FC 5 µl per 10<sup>6</sup> cells in  
100 µl volume

## Background

Predicted to enable identical protein binding activity and protein C-terminus binding activity. Involved in myoblast development. Acts upstream of or within canonical Wnt signaling pathway. Located in external side of plasma membrane. Is expressed in several structures, including alimentary system; egg cylinder; sensory organ; skin; and urinary system. Orthologous to human SDC1 (syndecan 1).

## Immunogen Information

### Gene ID

20969

### Swiss Prot

P18828

### Immunogen

Recombinant protein (or fragment). This information is considered to be commercially sensitive.

### Synonyms

Sstn; Synd; CD138; Synd1; syn-1

## Contact

 | 400-999-6126

 | [cn.market@abclonal.com.cn](mailto:cn.market@abclonal.com.cn)

 | [www.abclonal.com.cn](http://www.abclonal.com.cn)

## Product Information

### Source

Rabbit

### Isotype

IgG

### Purification

Affinity purification

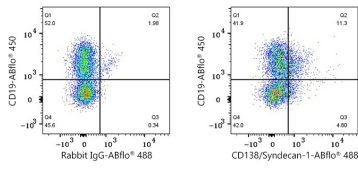
### Storage

Store at 2-8°C. Avoid freeze.

Buffer: PBS containing 0.2% BSA, preserved with proclin300 or sodium azide (as specified on the Certificate of Analysis), pH 7.3.

## Validation Data

---



Flow cytometry:  $1 \times 10^6$  C57BL/6 mouse bone marrow cells were surface-stained with ABflo® 450 Rabbit anti-Mouse CD19 mAb (A26192, 5  $\mu$ l/Test) and ABflo® 488 Rabbit IgG isotype control (A22069, 5  $\mu$ l/Test, left) or ABflo® 488 Rabbit anti-Mouse CD138/Syndecan-1 mAb (A24153, 5  $\mu$ l/Test, right). Cells in the lymphocyte gate were used for analysis.