

ABflo® 647 Rabbit anti-Mouse CD138/Syndecan-1 mAb

Catalog No.: A24154

Basic Information

Observed MW

Calculated MW

33kDa

Category

Primary antibody

Applications

IF/ICC,FC

Cross-Reactivity

Mouse

CloneNo number

ARC66008-ABflo647

Conjugate

ABflo® 647. Ex:648nm. Em:664nm.

Recommended Dilutions

IF/ICC 1:50 - 1:200

FC 5 µl per 10⁶ cells in
100 µl volume

Background

Predicted to enable identical protein binding activity and protein C-terminus binding activity. Involved in myoblast development. Acts upstream of or within canonical Wnt signaling pathway. Located in external side of plasma membrane. Is expressed in several structures, including alimentary system; egg cylinder; sensory organ; skin; and urinary system. Orthologous to human SDC1 (syndecan 1).

Immunogen Information

Gene ID

20969

Swiss Prot

P18828

Immunogen

Recombinant fusion protein containing a sequence corresponding to amino acids 23-255 of mouse CD138/Syndecan-1 (NP_035649.1).

Synonyms

Sstn; Synd; CD138; Synd1; syn-1

Contact

☎ | 400-999-6126

✉ | cn.market@abclonal.com.cn

🌐 | www.abclonal.com.cn

Product Information

Source

Rabbit

Isotype

IgG

Purification

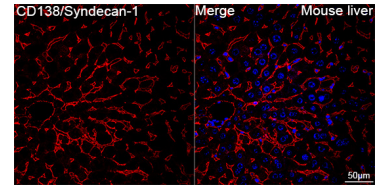
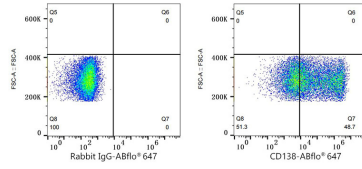
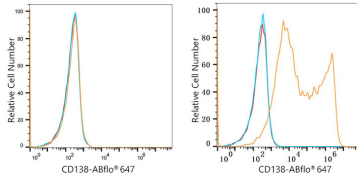
Affinity purification

Storage

Store at 2-8°C. Avoid freeze.

Buffer: PBS with 0.03% proclin300,0.2% BSA,pH7.3.

Validation Data



Flow cytometry: 1×10^6 CHO cells (negative control, left) and CHO (Transfection, right) cells were surface-stained with ABflo® 647 Rabbit anti-Mouse CD138/Syndecan-1 mAb (A24154, 5 μ l/Test, orange line) or ABflo® 647 Rabbit IgG isotype control (A22070, 5 μ l/Test, blue line). Non-fluorescently stained cells were used as blank control (red line).

Flow cytometry: 1×10^6 CHO (Transfection) cells were surface-stained with ABflo® 647 Rabbit IgG isotype control (A22070, 5 μ l/Test, left) or ABflo® 647 Rabbit anti-Mouse CD138/Syndecan-1 mAb (A24154, 5 μ l/Test, right).

Confocal imaging of paraffin-embedded Mouse liver tissue using ABflo® 647 Rabbit anti-Mouse CD138/Syndecan-1 mAb (A24154, dilution 1:200). DAPI was used for nuclear staining (Blue). High pressure antigen retrieval performed with 0.01M Citrate Buffer (pH 6.0) prior to IF staining. Objective: 40x.