

ABflo® 488 Rabbit anti-Human CD9 mAb

Catalog No.: A24156

Basic Information

Observed MW

Calculated MW

25kDa

Category

Primary antibody

Applications

FC

Cross-Reactivity

Human

CloneNo number

ARC65639-ABflo488

Conjugate

ABflo® 488. Ex:491nm. Em:516nm.

Recommended Dilutions

FC 5 µl per 10⁶ cells in
100 µl volume

Background

This gene encodes a member of the transmembrane 4 superfamily, also known as the tetraspanin family. Tetraspanins are cell surface glycoproteins with four transmembrane domains that form multimeric complexes with other cell surface proteins. The encoded protein functions in many cellular processes including differentiation, adhesion, and signal transduction, and expression of this gene plays a critical role in the suppression of cancer cell motility and metastasis.

Immunogen Information

Gene ID

928

Swiss Prot

P21926

Immunogen

Recombinant fusion protein containing a sequence corresponding to amino acids 1-228 of human CD9(NP_001760.1).

Synonyms

MIC3; MRP-1; BTCC-1; DRAP-27; TSPAN29; TSPAN-29

Contact

 | 400-999-6126

 | cn.market@abclonal.com.cn

 | www.abclonal.com.cn

Product Information

Source

Rabbit

Isotype

IgG

Purification

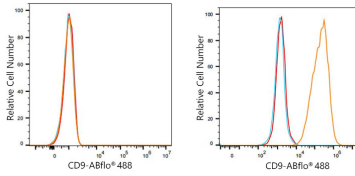
Affinity purification

Storage

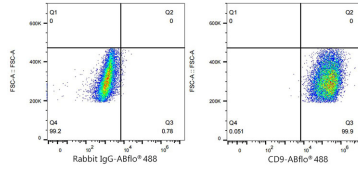
Store at 2-8°C. Avoid freeze.

Buffer: PBS with 0.03% proclin300,0.2% BSA,pH7.3.

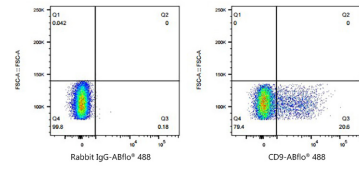
Validation Data



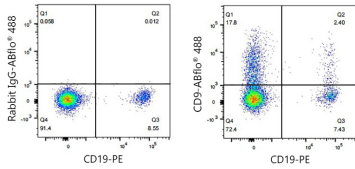
Flow cytometry: 1×10^6 CHO cells (negative control, left) and CHO (Transfection, right) cells were surface-stained with ABflo® 488 Rabbit anti-Human CD9 mAb (A24156,5 $\mu\text{l}/\text{Test}$, orange line) or ABflo® 488 Rabbit IgG isotype control (A22069,5 $\mu\text{l}/\text{Test}$, blue line). Non-fluorescently stained cells were used as blank control (red line).



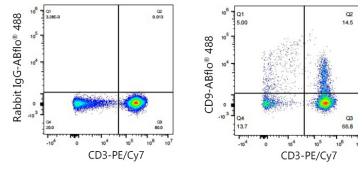
Flow cytometry: 1×10^6 CHO (Transfection) cells were surface-stained with ABflo® 488 Rabbit IgG isotype control (A22069,5 $\mu\text{l}/\text{Test}$, left) or ABflo® 488 Rabbit anti-Human CD9 mAb (A24156,5 $\mu\text{l}/\text{Test}$, right).



Flow cytometry: 1×10^6 Human PBMC were surface-stained with ABflo® 488 Rabbit IgG isotype control (A22069,5 $\mu\text{l}/\text{Test}$, left) or ABflo® 488 Rabbit anti-Human CD9 mAb (A24156,5 $\mu\text{l}/\text{Test}$, right).



Flow cytometry: 1×10^6 Human PBMC were surface-stained with PE Mouse anti-Human CD19 mAb (A22816,5 $\mu\text{l}/\text{Test}$) and ABflo® 488 Rabbit anti-Human CD9 mAb (A24156,5 $\mu\text{l}/\text{Test}$, right) or ABflo® 488 Rabbit IgG isotype control (A22069,5 $\mu\text{l}/\text{Test}$, left).



Flow cytometry: 1×10^6 Human PBMC were surface-stained with PE/Cy7 Mouse anti-Human CD3 mAb (A22798,5 $\mu\text{l}/\text{Test}$) and ABflo® 488 Rabbit anti-Human CD9 mAb (A24156,5 $\mu\text{l}/\text{Test}$, right) or ABflo® 488 Rabbit IgG isotype control (A22069,5 $\mu\text{l}/\text{Test}$, left).