

# ABflo® 647 Rabbit anti-Human CD9 mAb

Catalog No.: A24157

## Basic Information

### Observed MW

### Calculated MW

25kDa

### Category

Primary antibody

### Applications

FC

### Cross-Reactivity

Human

### CloneNo number

ARC65639-ABflo647

### Conjugate

ABflo® 647. Ex:648nm. Em:664nm.

## Recommended Dilutions

FC 5 µl per 10<sup>6</sup> cells in  
100 µl volume

## Background

This gene encodes a member of the transmembrane 4 superfamily, also known as the tetraspanin family. Tetraspanins are cell surface glycoproteins with four transmembrane domains that form multimeric complexes with other cell surface proteins. The encoded protein functions in many cellular processes including differentiation, adhesion, and signal transduction, and expression of this gene plays a critical role in the suppression of cancer cell motility and metastasis.

## Immunogen Information

### Gene ID

928

### Swiss Prot

P21926

### Immunogen

Recombinant fusion protein containing a sequence corresponding to amino acids 1-228 of human CD9(NP\_001760.1).

### Synonyms

MIC3; MRP-1; BTCC-1; DRAP-27; TSPAN29; TSPAN-29

## Contact

☎ | 400-999-6126

✉ | [cn.market@abclonal.com.cn](mailto:cn.market@abclonal.com.cn)

🌐 | [www.abclonal.com.cn](http://www.abclonal.com.cn)

## Product Information

### Source

Rabbit

### Isotype

IgG

### Purification

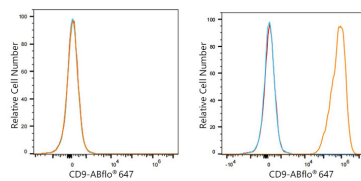
Affinity purification

### Storage

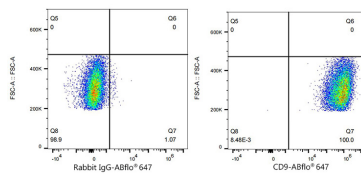
Store at 2-8°C. Avoid freeze.

Buffer: PBS with 0.03% proclin300,0.2% BSA,pH7.3.

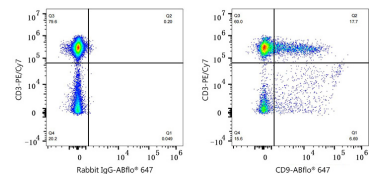
## Validation Data



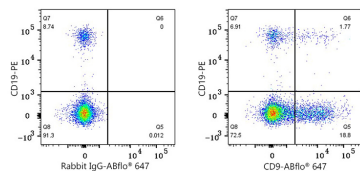
Flow cytometry:  $1 \times 10^6$  CHO cells (negative control, left) and CHO (Transfection, right) cells were surface-stained with ABflo® 647 Rabbit anti-Human CD9 mAb (A24157,5  $\mu\text{l}/\text{Test}$ , orange line) or ABflo® 647 Rabbit IgG isotype control (A22070,5  $\mu\text{l}/\text{Test}$ , blue line). Non-fluorescently stained cells were used as blank control (red line).



Flow cytometry:  $1 \times 10^6$  CHO (Transfection) cells were surface-stained with ABflo® 647 Rabbit IgG isotype control (A22070,5  $\mu\text{l}/\text{Test}$ , left) or ABflo® 647 Rabbit anti-Human CD9 mAb (A24157,5  $\mu\text{l}/\text{Test}$ , right).



Flow cytometry:  $1 \times 10^6$  Human PBMC were surface-stained with PE/Cyanine7 Mouse anti-Human CD3 mAb (A22798,5  $\mu\text{l}/\text{Test}$ ) and ABflo® 647 Rabbit anti-Human CD9 mAb (A24157,5  $\mu\text{l}/\text{Test}$ , right) or ABflo® 647 Rabbit IgG isotype control (A22070,5  $\mu\text{l}/\text{Test}$ , left).



Flow cytometry:  $1 \times 10^6$  Human PBMC were surface-stained with PE Mouse anti-Human CD19 mAb (A22816,5  $\mu\text{l}/\text{Test}$ ) and ABflo® 647 Rabbit anti-Human CD9 mAb (A24157,5  $\mu\text{l}/\text{Test}$ , right) or ABflo® 647 Rabbit IgG isotype control (A22070,5  $\mu\text{l}/\text{Test}$ , left).