

# CD138/Syndecan-1 Rabbit mAb

Catalog No.: A24159 **Recombinant**

## Basic Information

### Observed MW

### Calculated MW

33kDa

### Category

Primary antibody

### Applications

ELISA,FC,IF/ICC

### Cross-Reactivity

Mouse

### CloneNo number

ARC66008

## Background

Predicted to enable identical protein binding activity and protein C-terminus binding activity. Involved in myoblast development. Acts upstream of or within canonical Wnt signaling pathway. Located in external side of plasma membrane. Is expressed in several structures, including alimentary system; egg cylinder; sensory organ; skin; and urinary system. Orthologous to human SDC1 (syndecan 1).

## Recommended Dilutions

**FC** 1:500 - 1:1000

**IF/ICC** 1:50-1:200

## Immunogen Information

### Gene ID

20969

### Swiss Prot

P18828

### Immunogen

Recombinant fusion protein containing a sequence corresponding to amino acids 23-255 of mouse CD138/Syndecan-1 (NP\_035649.1).

### Synonyms

Sstn; Synd; CD138; Synd1; syn-1; CD138/Syndecan-1

## Contact

☎ | 400-999-6126

✉ | [cn.market@abclonal.com.cn](mailto:cn.market@abclonal.com.cn)

🌐 | [www.abclonal.com.cn](http://www.abclonal.com.cn)

## Product Information

### Source

Rabbit

### Isotype

IgG

### Purification

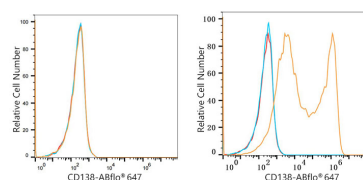
Affinity purification

### Storage

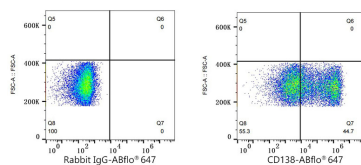
Store at -20°C. Avoid freeze / thaw cycles.

Buffer: PBS with 0.05% proclin300,0.05% BSA,50% glycerol,pH7.3.

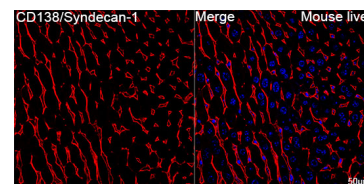
## Validation Data



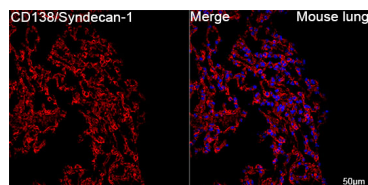
Flow cytometry: 1X10<sup>6</sup> CHO cells (negative control, left) and CHO (Transfection, right) cells were surface-stained with CD138/Syndecan-1 Rabbit mAb (A24159, 2 µg/mL, orange line) or ABflo® 647 Rabbit IgG isotype control (A22070, 5 µl/Test, blue line), followed by Alexa Fluor® 647 conjugated goat anti-rabbit pAb staining. Non-fluorescently stained cells were used as blank control (red line).



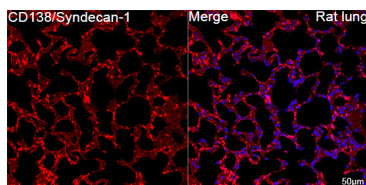
Flow cytometry: 1X10<sup>6</sup> CHO (Transfection) cells were surface-stained with ABflo® 647 Rabbit IgG isotype control (A22070, 5 µl/Test, left) or CD138/Syndecan-1 Rabbit mAb (A24159, 2 µg/mL, right).



Confocal imaging of paraffin-embedded Mouse liver tissue using CD138/Syndecan-1 Rabbit mAb (A24159, dilution 1:200) followed by a further incubation with Cy3 Goat Anti-Rabbit IgG (H+L) (AS007, dilution 1:500) (Red). DAPI was used for nuclear staining (Blue). High pressure antigen retrieval performed with 0.01M Citrate Buffer (pH 6.0) prior to IF staining. Objective: 40x.



Confocal imaging of paraffin-embedded Mouse lung tissue using CD138/Syndecan-1 Rabbit mAb (A24159, dilution 1:200) followed by a further incubation with Cy3 Goat Anti-Rabbit IgG (H+L) (AS007, dilution 1:500) (Red). DAPI was used for nuclear staining (Blue). High pressure antigen retrieval performed with 0.01M Citrate Buffer (pH 6.0) prior to IF staining. Objective: 40x.



Confocal imaging of paraffin-embedded Rat lung tissue using CD138/Syndecan-1 Rabbit mAb (A24159, dilution 1:200) followed by a further incubation with Cy3 Goat Anti-Rabbit IgG (H+L) (AS007, dilution 1:500) (Red). DAPI was used for nuclear staining (Blue). High pressure antigen retrieval performed with 0.01M Citrate Buffer (pH 6.0) prior to IF staining. Objective: 40x.