

ASC/TMS1 Rabbit mAb

Catalog No.: A24165

Recombinant

3 Publications

Basic Information

Observed MW

17kDa/24kDa

Calculated MW

21kDa

Category

Primary antibody

Applications

WB,IF/ICC,IF-P,IHC-P,ELISA

Cross-Reactivity

Human, Mouse, Rat

CloneNo number

ARC65827

Background

Enables identical protein binding activity and protein dimerization activity. Involved in several processes, including activation of cysteine-type endopeptidase activity; positive regulation of cytokine production; and regulation of defense response. Acts upstream of or within several processes, including defense response to Gram-positive bacterium; positive regulation of macromolecule metabolic process; and regulation of autophagy. Located in cytosol; extracellular region; and nucleus. Part of inflammasome complex. Is expressed in several structures, including alimentary system; brain; heart; hemolymphoid system gland; and urinary system. Orthologous to human PYCARD (PYD and CARD domain containing).

Recommended Dilutions

WB 1:3000 - 1:18000**IF/ICC** 1:50 - 1:200**IF-P** 1:50 - 1:200**IHC-P** 1:200 - 1:2000

ELISA Recommended starting concentration is 1 µg/mL. Please optimize the concentration based on your specific assay requirements.

Immunogen Information

Gene ID

66824

Swiss Prot

Q9EPB4

Immunogen

Recombinant protein (or fragment). This information is considered to be commercially sensitive.

Synonyms

Asc; TNS1; masc; CARD5; TMS-1; 9130417A21Rik; ASC/TMS1

Contact

 | 400-999-6126 | cn.market@abclonal.com.cn | www.abclonal.com.cn

Product Information

Source

Rabbit

Isotype

IgG

Purification

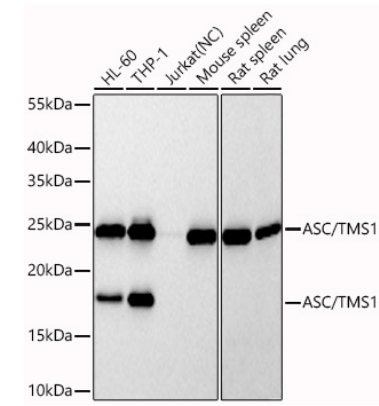
Affinity purification

Storage

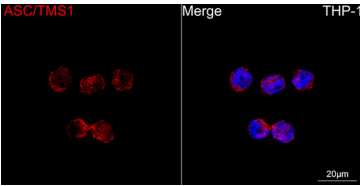
Store at -20°C. Avoid freeze / thaw cycles.

Buffer: PBS with 0.09% sodium azide, 0.05% BSA, 50% glycerol, pH7.3.

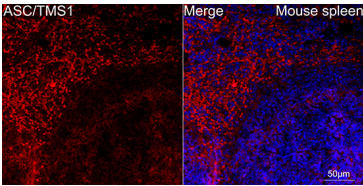
Validation Data



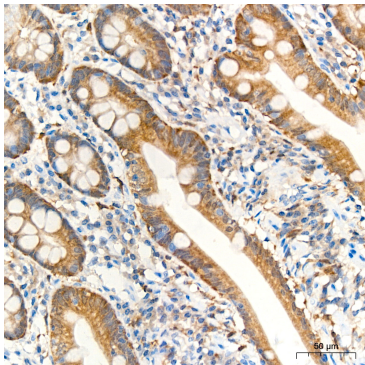
Western blot analysis of various lysates using ASC/TMS1 Rabbit mAb (A24165) at 1:3000 dilution incubated overnight at 4°C.
Secondary antibody: HRP-conjugated Goat anti-Rabbit IgG (H+L) (AS014) at 1:10000 dilution.
Lysates/proteins: 25 µg per lane.
Blocking buffer: 3% nonfat dry milk in TBST.
Detection: ECL Basic Kit (RM00020).
Negative control (NC): Jurkat
Exposure time: 30s.



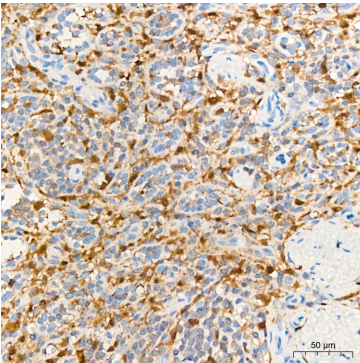
Confocal imaging of THP-1 cells using ASC/TMS1 Rabbit mAb (A24165,dilution 1:200) followed by a further incubation with Cy3 Goat Anti-Rabbit IgG (H+L) (AS007,dilution 1:500)(Red).DAPI was used for nuclear staining (Blue). Objective: 100x.



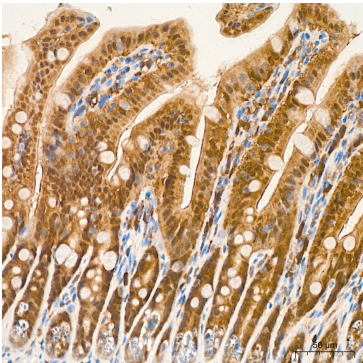
Confocal imaging of paraffin-embedded Mouse spleen using ASC/TMS1 Rabbit mAb (A24165,dilution 1:200) followed by a further incubation with Cy3 Goat Anti-Rabbit IgG (H+L) (AS007,dilution 1:500)(Red). DAPI was used for nuclear staining (Blue). Objective: 40x. Perform high pressure antigen retrieval with 0.01 M citrate buffer (pH 6.0) prior to IF staining.



Immunohistochemistry analysis of paraffin-embedded Human colon tissue using ASC/TMS1 Rabbit mAb (A24165) at a dilution of 1:200 (40x lens). High pressure antigen retrieval was performed with 0.01 M citrate buffer (pH 6.0) prior to IHC staining.



Immunohistochemistry analysis of paraffin-embedded Human spleen tissue using ASC/TMS1 Rabbit mAb (A24165) at a dilution of 1:200 (40x lens). High pressure antigen retrieval was performed with 0.01 M citrate buffer (pH 6.0) prior to IHC staining.



Immunohistochemistry analysis of paraffin-embedded Mouse intestine tissue using ASC/TMS1 Rabbit mAb (A24165) at a dilution of 1:200 (40x lens). High pressure antigen retrieval was performed with 0.01 M citrate buffer (pH 6.0) prior to IHC staining.