

# [KD Validated] Thymidylate synthase Rabbit mAb

Catalog No.: A24168 **Recombinant**

## Basic Information

**Observed MW**

36kDa

**Calculated MW**

36kDa

**Category**

Primary antibody

**Applications**

ELISA,WB,IHC-P

**Cross-Reactivity**

Human

**CloneNo number**

ARC65474

## Background

Thymidylate synthase catalyzes the methylation of deoxyuridylate to deoxythymidylate using, 10-methylenetetrahydrofolate (methylene-THF) as a cofactor. This function maintains the dTMP (thymidine-5-prime monophosphate) pool critical for DNA replication and repair. The enzyme has been of interest as a target for cancer chemotherapeutic agents. It is considered to be the primary site of action for 5-fluorouracil, 5-fluoro-2-prime-deoxyuridine, and some folate analogs. Expression of this gene and that of a naturally occurring antisense transcript, mitochondrial enolase superfamily member 1 (GeneID:55556), vary inversely when cell-growth progresses from late-log to plateau phase. Polymorphisms in this gene may be associated with etiology of neoplasia, including breast cancer, and response to chemotherapy.

## Recommended Dilutions

<b>WB</b>	1:2000 - 1:6000
<b>IHC-P</b>	1:100 - 1:500

## Immunogen Information

**Gene ID**

7298

**Swiss Prot**

P04818

**Immunogen**

Recombinant fusion protein containing a sequence corresponding to amino acids 1-313 of human Thymidylate synthase(NP\_001062.1).

**Synonyms**

TS; TMS; DKCD; HST422; [KD Validated] Thymidylate synthase

## Contact

 | 400-999-6126 | [cn.market@abclonal.com.cn](mailto:cn.market@abclonal.com.cn) | [www.abclonal.com.cn](http://www.abclonal.com.cn)

## Product Information

**Source**

Rabbit

**Isotype**

IgG

**Purification**

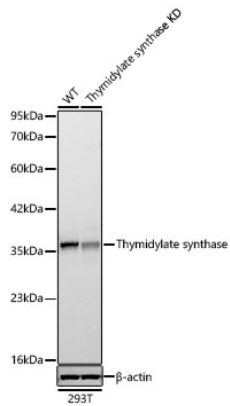
Affinity purification

**Storage**

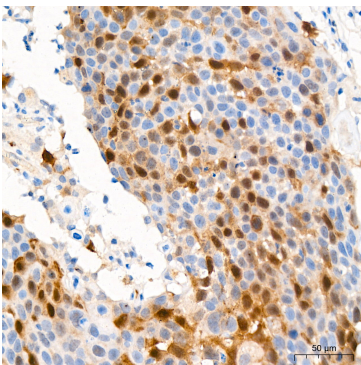
Store at -20°C. Avoid freeze / thaw cycles.

Buffer: PBS with 0.05% proclin300,0.05% BSA,50% glycerol,pH7.3.

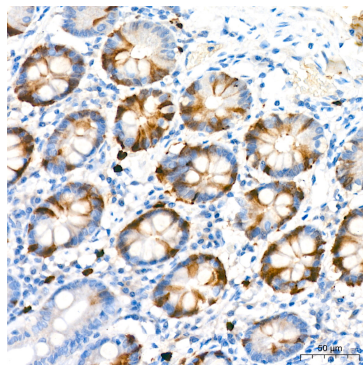
## Validation Data



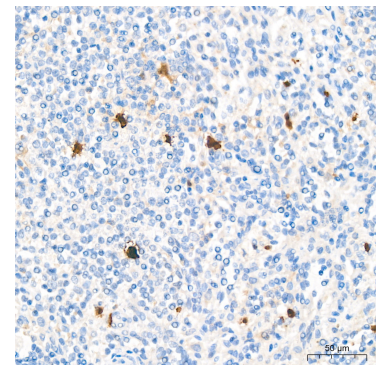
Western blot analysis of lysates from wild type (WT) and Thymidylate synthase knockdown (KD) 293T cells using [KD Validated] Thymidylate synthase Rabbit mAb (A24168) at 1:5000 dilution. Secondary antibody: HRP Goat Anti-Rabbit IgG (H+L) (AS014) at 1:10000 dilution. Lysates/proteins: 25 µg per lane. Blocking buffer: 3% nonfat dry milk in TBST. Detection: ECL Basic Kit (RM00020). Exposure time: 10s.



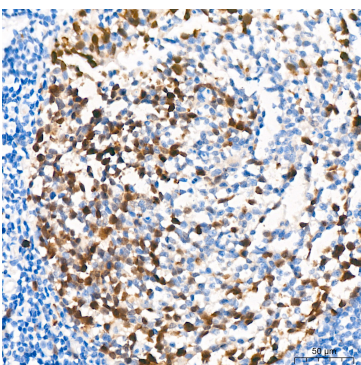
Immunohistochemistry analysis of Thymidylate synthase in paraffin-embedded human cervix cancer tissue using [KD Validated] Thymidylate synthase Rabbit mAb (A24168) at a dilution of 1:300 (40x lens). High pressure antigen retrieval was performed with 0.01 M citrate buffer (pH 6.0) prior to IHC staining.



Immunohistochemistry analysis of Thymidylate synthase in paraffin-embedded human colon tissue using [KD Validated] Thymidylate synthase Rabbit mAb (A24168) at a dilution of 1:300 (40x lens). High pressure antigen retrieval was performed with 0.01 M citrate buffer (pH 6.0) prior to IHC staining.



Immunohistochemistry analysis of Thymidylate synthase in paraffin-embedded human spleen tissue using [KD Validated] Thymidylate synthase Rabbit mAb (A24168) at a dilution of 1:300 (40x lens). High pressure antigen retrieval was performed with 0.01 M citrate buffer (pH 6.0) prior to IHC staining.



Immunohistochemistry analysis of Thymidylate synthase in paraffin-embedded human tonsil tissue using [KD Validated] Thymidylate synthase Rabbit mAb (A24168) at a dilution of 1:300 (40x lens). High pressure antigen retrieval was performed with 0.01 M citrate buffer (pH 6.0) prior to IHC staining.