

# PKC mu Rabbit mAb

Catalog No.: A2417 **Recombinant** **2 Publications**

## Basic Information

### Observed MW

102kDa

### Calculated MW

102kDa

### Category

Primary antibody

### Applications

ELISA, WB

### Cross-Reactivity

Human, Mouse, Rat

### CloneNo number

ARC1919

## Background

The protein encoded by this gene is a serine/threonine protein kinase involved in many cellular processes, including Golgi body membrane integrity and transport, cell migration and differentiation, MAPK8/JNK1 and Ras pathway signaling, MAPK1/3 (ERK1/2) pathway signaling, cell survival, and regulation of cell shape and adhesion.

## Recommended Dilutions

WB 1:500 - 1:1000

## Immunogen Information

### Gene ID

5587

### Swiss Prot

Q15139

### Immunogen

A synthetic peptide corresponding to a sequence within amino acids 200-300 of human PKC mu (Q15139).

### Synonyms

PKD; PKCM; CHDED; PRKCM; PKC-MU; PKC mu

## Contact

☎ | 400-999-6126

✉ | [cn.market@abclonal.com.cn](mailto:cn.market@abclonal.com.cn)

🌐 | [www.abclonal.com.cn](http://www.abclonal.com.cn)

## Product Information

### Source

Rabbit

### Isotype

IgG

### Purification

Affinity purification

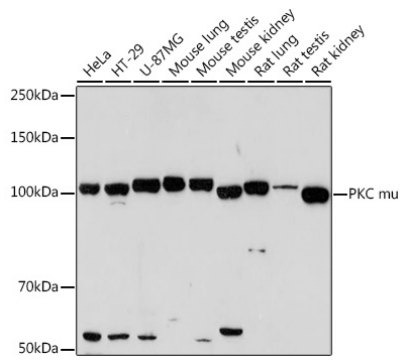
### Storage

Store at -20°C. Avoid freeze / thaw cycles.

Buffer: PBS with 0.02% sodium azide, 0.05% BSA, 50% glycerol, pH7.3.

## Validation Data

---



Western blot analysis of various lysates using PKC mu Rabbit mAb (A2417) at 1:1000 dilution.  
Secondary antibody: HRP Goat Anti-Rabbit IgG (H+L) (AS014) at 1:10000 dilution.  
Lysates/proteins: 25µg per lane.  
Blocking buffer: 3% nonfat dry milk in TBST.  
Detection: ECL Enhanced Kit (RM00021).  
Exposure time: 3min.