

# ABflo® 594 Rabbit anti-Human TROP-2 mAb

Catalog No.: A24177

## Basic Information

### Observed MW

Refer to figures

### Calculated MW

35kDa

### Category

Primary antibody

### Applications

FC

### Cross-Reactivity

Human

### CloneNo number

ARC51505-ABf594

### Conjugate

ABflo® 594. Ex:588nm. Em:604nm.

## Recommended Dilutions

FC 5  $\mu$ l per  $10^6$  cells in  
100  $\mu$ l volume

## Background

This intronless gene encodes a carcinoma-associated antigen. This antigen is a cell surface receptor that transduces calcium signals. Mutations of this gene have been associated with gelatinous drop-like corneal dystrophy.

## Immunogen Information

### Gene ID

4070

### Swiss Prot

P09758

### Immunogen

Recombinant fusion protein containing a sequence corresponding to amino acids 27-274 of human (NP\_002344.2).

### Synonyms

EGP1; GP50; M1S1; EGP-1; TROP2; GA7331; GA733-1

## Contact

☎ | 400-999-6126

✉ | [cn.market@abclonal.com.cn](mailto:cn.market@abclonal.com.cn)

🌐 | [www.abclonal.com.cn](http://www.abclonal.com.cn)

## Product Information

### Source

Rabbit

### Isotype

IgG

### Purification

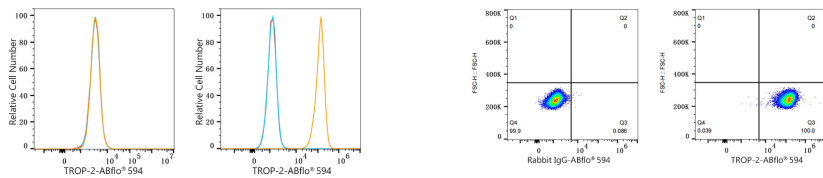
Affinity purification

### Storage

Store at 2-8°C. Avoid freeze.

Buffer: PBS with 0.03% proclin300,0.2% BSA,pH7.3.

## Validation Data



Flow cytometry:  $1 \times 10^6$  U-118 MG cells (negative control, left) and MCF7 cells (right) were surface-stained with ABflo® 594 Rabbit anti-Human TROP-2 mAb (A24177, 5  $\mu$ l/Test, orange line) or ABflo® 594 Rabbit IgG isotype control (A23821, 5  $\mu$ l/Test, blue line). Non-fluorescently stained cells were used as blank control (red line).

Flow cytometry:  $1 \times 10^6$  MCF7 cells were surface-stained with ABflo® 594 Rabbit IgG isotype control (A23821, 5  $\mu$ l/Test, left) or ABflo® 594 Rabbit anti-Human TROP-2 mAb (A24177, 5  $\mu$ l/Test, right).