

ABflo® 594 Rabbit anti-Human CEACAM6 mAb

Catalog No.: A24188

Basic Information

Observed MW

Calculated MW

37kDa

Category

Primary antibody

Applications

FC

Cross-Reactivity

Human

CloneNo number

ARC54333

Conjugate

ABflo® 594. Ex:588nm. Em:604nm.

Background

This gene encodes a protein that belongs to the carcinoembryonic antigen (CEA) family whose members are glycosyl phosphatidyl inositol (GPI) anchored cell surface glycoproteins. Members of this family play a role in cell adhesion and are widely used as tumor markers in serum immunoassay determinations of carcinoma. This gene affects the sensitivity of tumor cells to adenovirus infection. The protein encoded by this gene acts as a receptor for adherent-invasive E. coli adhesion to the surface of ileal epithelial cells in patients with Crohn's disease. This gene is clustered with genes and pseudogenes of the cell adhesion molecules subgroup of the CEA family on chromosome 19.

Recommended Dilutions

FC 5 µl per 10⁶ cells in
100 µl volume

Immunogen Information

Gene ID

4680

Swiss Prot

P40199

Immunogen

Recombinant protein (or fragment). This information is considered to be commercially sensitive.

Synonyms

NCA; CEAL; CD66c

Contact

☎ | 400-999-6126

✉ | cn.market@abclonal.com.cn

🌐 | www.abclonal.com.cn

Product Information

Source

Rabbit

Isotype

IgG

Purification

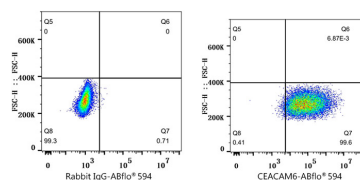
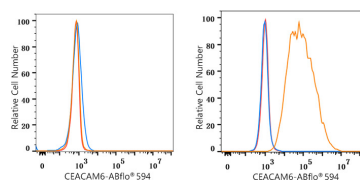
Affinity purification

Storage

Store at 2-8°C. Avoid freeze.

Buffer: PBS containing 0.2% BSA, preserved with proclin300 or sodium azide (as specified on the Certificate of Analysis), pH 7.3.

Validation Data



Flow cytometry: 1X10⁶ HeLa cells (negative control, left) and BxPC-3 cells (right) were surface-stained with ABflo® 594 Rabbit anti-Human CEACAM6 mAb (A24188, 5 µl/Test, orange line) or ABflo® 594 Rabbit IgG isotype control (A23821, 5 µl/Test, blue line). Non-fluorescently stained cells were used as blank control (red line).

Flow cytometry: 1X10⁶ BxPC-3 cells were surface-stained with ABflo® 594 Rabbit IgG isotype control (A23821, 5 µl/Test, left) or ABflo® 594 Rabbit anti-Human CEACAM6 mAb (A24188, 5 µl/Test, right).