

ABflo® 594 Rabbit anti-Human LAMP2 mAb

Catalog No.: A24189

Basic Information

Observed MW

Calculated MW

44kDa/45kDa

Category

Primary antibody

Applications

FC (intra)

Cross-Reactivity

Human

CloneNo number

ARC54767

Conjugate

ABflo® 594. Ex:588nm. Em:604nm.

Background

The protein encoded by this gene is a member of a family of membrane glycoproteins. This glycoprotein provides selectins with carbohydrate ligands. It may play a role in tumor cell metastasis. It may also function in the protection, maintenance, and adhesion of the lysosome. Alternative splicing of this gene results in multiple transcript variants encoding distinct proteins.

Recommended Dilutions

FC (intra) 5 µl per 10⁶ cells in
 100 µl volume

Immunogen Information

Gene ID

3920

Swiss Prot

P13473

Immunogen

Recombinant protein (or fragment). This information is considered to be commercially sensitive.

Synonyms

DND; LAMPB; CD107b; LAMP-2; LGP-96; LGP110

Contact

☎ | 400-999-6126

✉ | cn.market@abclonal.com.cn

🌐 | www.abclonal.com.cn

Product Information

Source

Rabbit

Isotype

IgG

Purification

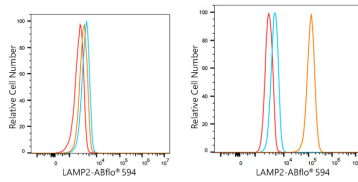
Affinity purification

Storage

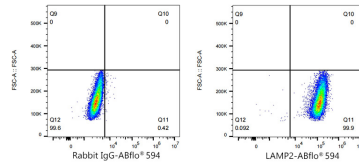
Store at 2-8°C. Avoid freeze.

Buffer: PBS containing 0.2% BSA, preserved with proclin300 or sodium azide (as specified on the Certificate of Analysis), pH 7.3.

Validation Data



Flow cytometry: 1×10^6 knockout (KO) HeLa cells (negative control, left) and HeLa cells (right) were intracellularly-stained with ABflo® 594 Rabbit anti-Human LAMP2 mAb (A24189, 5 μ l/Test, orange line) or ABflo® 594 Rabbit IgG isotype control (A23821, 5 μ l/Test, blue line). Non-fluorescently stained cells were used as blank control (red line).



Flow cytometry: 1×10^6 HeLa cells were intracellularly-stained with ABflo® 594 Rabbit IgG isotype control (A23821, 5 μ l/Test, left) or ABflo® 594 Rabbit anti-Human LAMP2 mAb (A24189, 5 μ l/Test, right).