

# ABflo® 594 Rabbit anti-Human AXL mAb

Catalog No.: A24194

## Basic Information

### Observed MW

### Calculated MW

98kDa

### Category

Primary antibody

### Applications

FC

### Cross-Reactivity

Human

### CloneNo number

ARC53013

### Conjugate

ABflo® 594. Ex:588nm. Em:604nm.

## Recommended Dilutions

FC 5 µl per 10<sup>6</sup> cells in  
100 µl volume

## Background

The protein encoded by this gene is a member of the Tyro3-Axl-Mer (TAM) receptor tyrosine kinase subfamily. The encoded protein possesses an extracellular domain which is composed of two immunoglobulin-like motifs at the N-terminal, followed by two fibronectin type-III motifs. It transduces signals from the extracellular matrix into the cytoplasm by binding to the vitamin K-dependent protein growth arrest-specific 6 (Gas6). This gene may be involved in several cellular functions including growth, migration, aggregation and anti-inflammation in multiple cell types. The encoded protein acts as a host cell receptor for multiple viruses, including Marburg, Ebola and Lassa viruses and is a candidate receptor for the SARS-CoV2 virus.

## Immunogen Information

### Gene ID

558

### Swiss Prot

P30530

### Immunogen

Recombinant protein (or fragment). This information is considered to be commercially sensitive.

### Synonyms

ARK; UFO; JTK11; Tyro7

## Contact

☎ | 400-999-6126

✉ | [cn.market@abclonal.com.cn](mailto:cn.market@abclonal.com.cn)

🌐 | [www.abclonal.com.cn](http://www.abclonal.com.cn)

## Product Information

### Source

Rabbit

### Isotype

IgG

### Purification

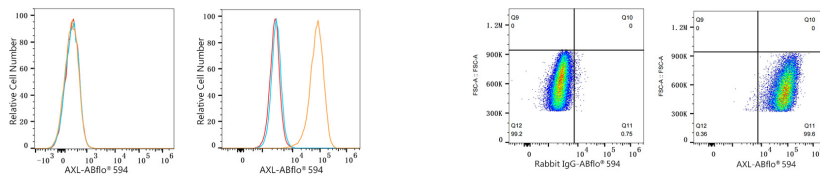
Affinity purification

### Storage

Store at 2-8°C. Avoid freeze.

Buffer: PBS containing 0.2% BSA, preserved with proclin300 or sodium azide (as specified on the Certificate of Analysis), pH 7.3.

## Validation Data



Flow cytometry:  $1 \times 10^6$  Jurkat cells (negative control, left) and U-251MG cells (right) were surface-stained with ABflo® 594 Rabbit anti-Human AXL mAb (A24194, 5  $\mu$ l/Test, orange line) or ABflo® 594 Rabbit IgG isotype control (A23821, 5  $\mu$ l/Test, blue line). Non-fluorescently stained cells were used as blank control (red line).

Flow cytometry:  $1 \times 10^6$  U-251MG cells were surface-stained with ABflo® 594 Rabbit IgG isotype control (A23821, 5  $\mu$ l/Test, left) or ABflo® 594 Rabbit anti-Human AXL mAb (A24194, 5  $\mu$ l/Test, right).