

# TNFSF8 Rabbit mAb

Catalog No.: A24215 **Recombinant**

## Basic Information

**Observed MW****Calculated MW**

26kDa

**Category**

Primary antibody

**Applications**

FC,ELISA

**Cross-Reactivity**

Human

**CloneNo number**

ARC64953

## Background

The protein encoded by this gene is a cytokine that belongs to the tumor necrosis factor (TNF) ligand family. This cytokine is a ligand for TNFRSF8/CD30, which is a cell surface antigen and a marker for Hodgkin lymphoma and related hematologic malignancies. The engagement of this cytokine expressed on B cell surface plays an inhibitory role in modulating Ig class switch. This cytokine was shown to enhance cell proliferation of some lymphoma cell lines, while to induce cell death and reduce cell proliferation of other lymphoma cell lines. The pleiotropic biologic activities of this cytokine on different CD30+ lymphoma cell lines may play a pathophysiologic role in Hodgkin's and some non-Hodgkin's lymphomas. Two transcript variants encoding different isoforms have been found for this gene.

## Recommended Dilutions

**FC** 1:500 - 1:1000**ELISA** Recommended starting concentration is 1 µg/mL. Please optimize the concentration based on your specific assay requirements.

## Immunogen Information

**Gene ID**

944

**Swiss Prot**

P32971

**Immunogen**

Recombinant protein (or fragment). This information is considered to be commercially sensitive.

**Synonyms**

CD153; CD30L; CD30LG; TNLG3A

## Contact

 | 400-999-6126 | [cn.market@abclonal.com.cn](mailto:cn.market@abclonal.com.cn) | [www.abclonal.com.cn](http://www.abclonal.com.cn)

## Product Information

**Source**

Rabbit

**Isotype**

IgG

**Purification**

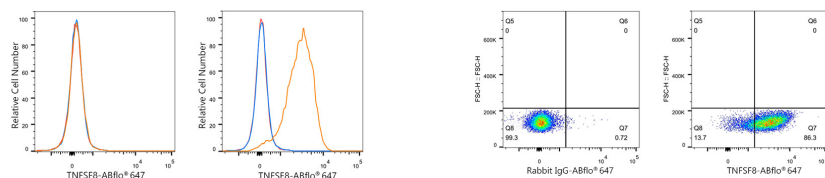
Affinity purification

**Storage**

Store at -20°C. Avoid freeze / thaw cycles.

Buffer: PBS with 0.05% proclin300, 0.05% BSA, 50% glycerol, pH7.3.

## Validation Data



Flow cytometry:  $1 \times 10^6$  K-562 cells (negative control, left) and Daudi cells (right) were surface-stained with TNFSF8 Rabbit mAb (A24215, 2  $\mu\text{g}/\text{mL}$ , orange line) or ABflo® 647 Rabbit IgG isotype control (A22070, 5  $\mu\text{l}/\text{Test}$ , blue line), followed by Alexa Fluor® 647 conjugated goat anti-rabbit pAb staining. Non-fluorescently stained cells were used as blank control (red line).

Flow cytometry:  $1 \times 10^6$  Daudi cells were surface-stained with ABflo® 647 Rabbit IgG isotype control (A22070, 5  $\mu\text{l}/\text{Test}$ , left) or TNFSF8 Rabbit mAb (A24215, 2  $\mu\text{g}/\text{mL}$ , right).