

# GATA2 Rabbit pAb

Catalog No.: A24217

## Basic Information

### Observed MW

Refer to figures

### Calculated MW

51kDa

### Category

Primary antibody

### Applications

ELISA, IHC-P

### Cross-Reactivity

Human

## Background

This gene encodes a member of the GATA family of zinc-finger transcription factors that are named for the consensus nucleotide sequence they bind in the promoter regions of target genes. The encoded protein plays an essential role in regulating transcription of genes involved in the development and proliferation of hematopoietic and endocrine cell lineages. Alternative splicing results in multiple transcript variants.

## Recommended Dilutions

IHC-P 1:50 - 1:200

## Immunogen Information

### Gene ID

2624

### Swiss Prot

P23769

### Immunogen

A synthetic peptide corresponding to a sequence within amino acids 240-340 of human GATA2(NP\_116027.2).

### Synonyms

DCML; IMD21; NFE1B; MONOMAC; GATA2

## Contact

 | 400-999-6126

 | [cn.market@abclonal.com.cn](mailto:cn.market@abclonal.com.cn)

 | [www.abclonal.com.cn](http://www.abclonal.com.cn)

## Product Information

### Source

Rabbit

### Isotype

IgG

### Purification

Affinity purification

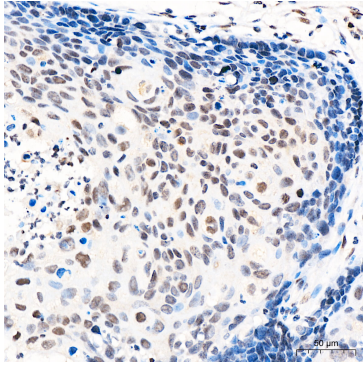
### Storage

Store at -20°C. Avoid freeze / thaw cycles.

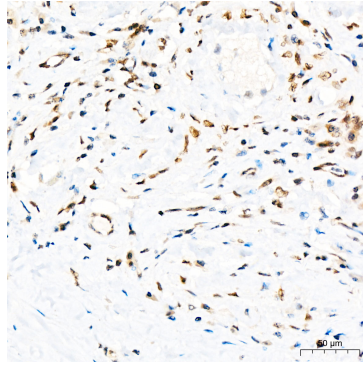
Buffer: PBS with 0.05% proclin300, 50% glycerol, pH7.3.

## Validation Data

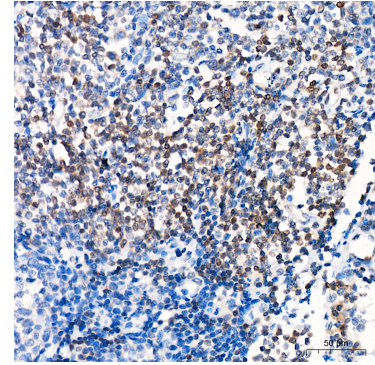
---



Immunohistochemistry analysis of GATA2 in paraffin-embedded Human cervical squamous cell carcinoma tissue using GATA2 Rabbit pAb (A24217) at a dilution of 1:100 (40x lens). High pressure antigen retrieval was performed with 0.01 M citrate buffer (pH 6.0) prior to IHC staining.



Immunohistochemistry analysis of GATA2 in paraffin-embedded human testis tissue using GATA2 Rabbit pAb (A24217) at a dilution of 1:100 (40x lens). High pressure antigen retrieval was performed with 0.01 M citrate buffer (pH 6.0) prior to IHC staining.



Immunohistochemistry analysis of GATA2 in paraffin-embedded human tonsil tissue using GATA2 Rabbit pAb (A24217) at a dilution of 1:100 (40x lens). High pressure antigen retrieval was performed with 0.01 M citrate buffer (pH 6.0) prior to IHC staining.