

ABflo® 488 Rabbit anti-Human β 2 Microglobulin mAb

Catalog No.: A24223

Basic Information

Observed MW

Refer to figures

Calculated MW

13kDa

Category

Primary antibody

Applications

FC

Cross-Reactivity

Human

CloneNo number

ARC60950-ABflo488

Conjugate

ABflo® 488. Ex:491nm. Em:516nm.

Recommended Dilutions

FC 5 μ l per 10^6 cells in
100 μ l volume

Background

This gene encodes a serum protein found in association with the major histocompatibility complex (MHC) class I heavy chain on the surface of nearly all nucleated cells. The protein has a predominantly beta-pleated sheet structure that can form amyloid fibrils in some pathological conditions. The encoded antimicrobial protein displays antibacterial activity in amniotic fluid. A mutation in this gene has been shown to result in hypercatabolic hypoproteinemia.

Immunogen Information

Gene ID

567

Swiss Prot

P61769

Immunogen

Recombinant fusion protein containing a sequence corresponding to amino acids 21-119 of human β 2 Microglobulin(NP_004039.1).

Synonyms

B2M; IMD43; beta-2-microglobulin

Contact

☎ | 400-999-6126

✉ | cn.market@abclonal.com.cn

🌐 | www.abclonal.com.cn

Product Information

Source

Rabbit

Isotype

IgG

Purification

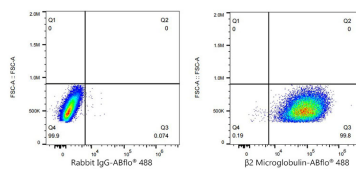
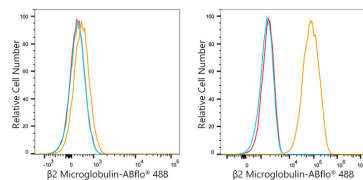
Affinity purification

Storage

Store at 2-8°C. Avoid freeze.

Buffer: PBS with 0.03% proclin300,0.2% BSA,pH7.3.

Validation Data



Flow cytometry: 1×10^6 Daudi cells (negative control, left) and HeLa (right) were surface-stained with ABflo® 488 Rabbit anti-Human $\beta 2$ Microglobulin mAb (A24223,5 $\mu\text{l}/\text{Test}$, orange line) or ABflo® 488 Rabbit IgG isotype control (A22069,5 $\mu\text{l}/\text{Test}$, blue line). Non-fluorescently stained Daudi cells were used as blank control (red line).

Flow cytometry: 1×10^6 HeLa were surface-stained with ABflo® 488 Rabbit IgG isotype control (A22069,5 $\mu\text{l}/\text{Test}$, left) or ABflo® 488 Rabbit anti-Human $\beta 2$ Microglobulin mAb (A24223,5 $\mu\text{l}/\text{Test}$, right).