

# ABflo® 647 Rabbit anti-Human β2 Microglobulin mAb

Catalog No.: A24224

## Basic Information

### Observed MW

Refer to figures

### Calculated MW

13kDa

### Category

Primary antibody

### Applications

FC

### Cross-Reactivity

Human

### CloneNo number

ARC60950

### Conjugate

ABflo® 647. Ex:648nm. Em:664nm.

## Recommended Dilutions

**FC** 5 µl per 10<sup>6</sup> cells in  
100 µl volume

## Background

This gene encodes a serum protein found in association with the major histocompatibility complex (MHC) class I heavy chain on the surface of nearly all nucleated cells. The protein has a predominantly beta-pleated sheet structure that can form amyloid fibrils in some pathological conditions. The encoded antimicrobial protein displays antibacterial activity in amniotic fluid. A mutation in this gene has been shown to result in hypercatabolic hypoproteinemia.

## Immunogen Information

### Gene ID

567

### Swiss Prot

P61769

### Immunogen

Recombinant protein (or fragment). This information is considered to be commercially sensitive.

### Synonyms

B2M; IMD43; beta-2-microglobulin

## Contact

☎ | 400-999-6126

✉ | [cn.market@abclonal.com.cn](mailto:cn.market@abclonal.com.cn)

🌐 | [www.abclonal.com.cn](http://www.abclonal.com.cn)

## Product Information

### Source

Rabbit

### Isotype

IgG

### Purification

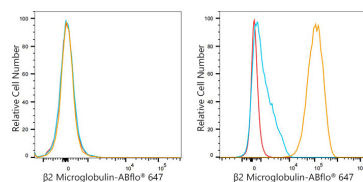
Affinity purification

### Storage

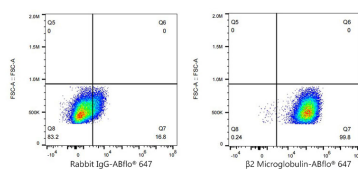
Store at 2-8°C. Avoid freeze.

Buffer: PBS containing 0.2% BSA, preserved with proclin300 or sodium azide (as specified on the Certificate of Analysis), pH 7.3.

## Validation Data



Flow cytometry:  $1 \times 10^6$  Daudi cells (negative control, left) and HeLa (right) were surface-stained with ABflo® 647 Rabbit anti-Human  $\beta 2$  Microglobulin mAb (A24224, 5  $\mu$ l/Test, orange line) or ABflo® 647 Rabbit IgG isotype control (A22070, 5  $\mu$ l/Test, blue line). Non-fluorescently stained cells were used as blank control (red line).



Flow cytometry:  $1 \times 10^6$  HeLa were surface-stained with ABflo® 647 Rabbit IgG isotype control (A22070, 5  $\mu$ l/Test, left) or ABflo® 647 Rabbit anti-Human  $\beta 2$  Microglobulin mAb (A24224, 5  $\mu$ l/Test, right).