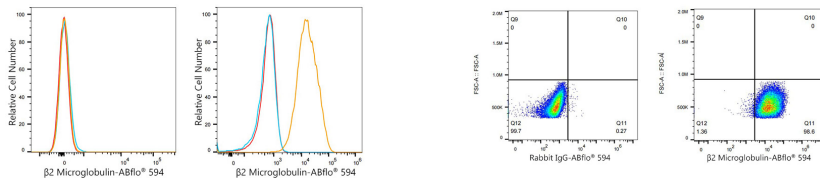




## Validation Data



Flow cytometry:  $1 \times 10^6$  Daudi cells (negative control, left) and HeLa (right) were surface-stained with ABflo® 594 Rabbit anti-Human  $\beta 2$  Microglobulin mAb (A24225,5  $\mu\text{l}/\text{Test}$ , orange line) or ABflo® 594 Rabbit IgG isotype control (A23821,5  $\mu\text{l}/\text{Test}$ , blue line). Non-fluorescently stained cells were used as blank control (red line).

Flow cytometry:  $1 \times 10^6$  HeLa were surface-stained with ABflo® 594 Rabbit IgG isotype control (A23821,5  $\mu\text{l}/\text{Test}$ , left) or ABflo® 594 Rabbit anti-Human  $\beta 2$  Microglobulin mAb (A24225,5  $\mu\text{l}/\text{Test}$ , right).