

# ABflo® 647 Rabbit anti-Human CD201/EPCR mAb

Catalog No.: A24227 **1 Publications**

## Basic Information

### Observed MW

**Calculated MW**  
26kDa

**Category**  
Primary antibody

**Applications**  
FC

**Cross-Reactivity**  
Human

**CloneNo number**  
ARC60942-ABflo647

**Conjugate**  
ABflo® 647. Ex:648nm. Em:664nm.

## Recommended Dilutions

**FC** 5 µl per 10<sup>6</sup> cells in  
100 µl volume

## Background

The protein encoded by this gene is a receptor for activated protein C, a serine protease activated by and involved in the blood coagulation pathway. The encoded protein is an N-glycosylated type I membrane protein that enhances the activation of protein C. Mutations in this gene have been associated with venous thromboembolism and myocardial infarction, as well as with late fetal loss during pregnancy. The encoded protein may also play a role in malarial infection and has been associated with cancer.

## Immunogen Information

Gene ID	Swiss Prot
10544	Q9UNN8

### Immunogen

Recombinant fusion protein containing a sequence corresponding to amino acids 18-210 of human CD201/EPCR (NP\_006395.2).

### Synonyms

PROCR; CCCA; CCD41; EPCR; protein C receptor

## Contact

 | 400-999-6126

 | [cn.market@abclonal.com.cn](mailto:cn.market@abclonal.com.cn)

 | [www.abclonal.com.cn](http://www.abclonal.com.cn)

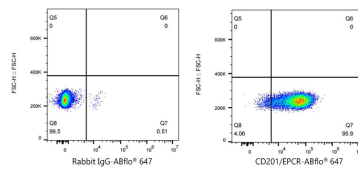
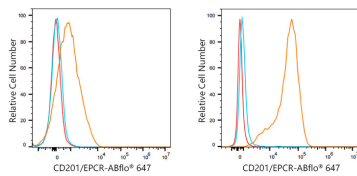
## Product Information

Source	Isotype	Purification
Rabbit	IgG	Affinity purification

### Storage

Store at 2-8°C. Avoid freeze.  
Buffer: PBS with 0.03% proclin300,0.2% BSA,pH7.3.

## Validation Data



Flow cytometry:  $1 \times 10^6$  Jurkat cells (low Expression, left) and A549 (right) were surface-stained with ABflo® 647 Rabbit anti-Human CD201/EPCR mAb (A24227, 5  $\mu$ l/Test, orange line) or ABflo® 647 Rabbit IgG isotype control (A22070, 5  $\mu$ l/Test, blue line). Non-fluorescently stained cells were used as blank control (red line).

Flow cytometry:  $1 \times 10^6$  A549 cells were surface-stained with ABflo® 647 Rabbit IgG isotype control (A22070, 5  $\mu$ l/Test, left) or ABflo® 647 Rabbit anti-Human CD201/EPCR mAb (A24227, 5  $\mu$ l/Test, right).