

EPCR/CD201 Rabbit mAb

Catalog No.: A24229 **Recombinant**

Basic Information

Observed MW

49kDa

Calculated MW

26kDa

Category

Primary antibody

Applications

WB,FC,ELISA

Cross-Reactivity

Human, Mouse

CloneNo number

ARC60942

Background

The protein encoded by this gene is a receptor for activated protein C, a serine protease activated by and involved in the blood coagulation pathway. The encoded protein is an N-glycosylated type I membrane protein that enhances the activation of protein C. Mutations in this gene have been associated with venous thromboembolism and myocardial infarction, as well as with late fetal loss during pregnancy. The encoded protein may also play a role in malarial infection and has been associated with cancer.

Recommended Dilutions

WB 1:500 - 1:1000

FC 1:100 - 1:500

ELISA Recommended starting concentration is 1 µg/mL. Please optimize the concentration based on your specific assay requirements.

Immunogen Information

Gene ID

10544

Swiss Prot

Q9UNN8

Immunogen

Recombinant fusion protein containing a sequence corresponding to amino acids 18-210 of human CD201/EPCR (NP_006395.2).

Synonyms

PROCR; CCCA; CCD41; EPCR; protein C receptor; EPCR/CD201

Contact

☎ | 400-999-6126

✉ | cn.market@abclonal.com.cn

🌐 | www.abclonal.com.cn

Product Information

Source

Rabbit

Isotype

IgG

Purification

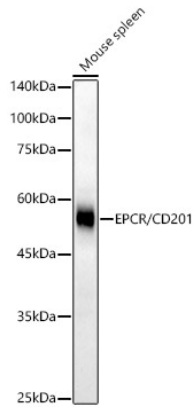
Affinity purification

Storage

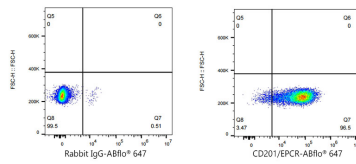
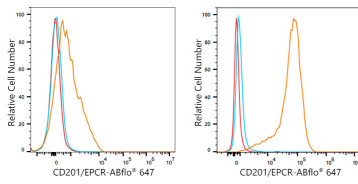
Store at -20°C. Avoid freeze / thaw cycles.

Buffer: PBS with 0.05% proclin300,0.05% BSA,50% glycerol,pH7.3.

Validation Data



Western blot analysis of lysates from Mouse spleen, using EPCR/CD201 Rabbit mAb (A24229) at 1:1000 dilution.
 Secondary antibody: HRP-conjugated Goat anti-Rabbit IgG (H+L) (AS014) at 1:10000 dilution.
 Lysates/proteins: 25µg per lane.
 Blocking buffer: 3% nonfat dry milk in TBST.
 Detection: ECL Basic Kit (RM00020).
 Exposure time: 180s.



Flow cytometry: 1×10^6 Jurkat cells (low Expression, left) and A549 (right) were surface-stained with CD201/EPCR Rabbit mAb (A24229, 2 µg/mL, orange line) or ABflo® 647 Rabbit IgG isotype control (A22070, 2 µg/mL, blue line), followed by Alexa Fluor® 647 conjugated goat anti-rabbit pAb (1:200 dilution) staining. Non-fluorescently stained cells were used as blank control (red line).

Flow cytometry: 1×10^6 A549 cells were surface-stained with ABflo® 647 Rabbit IgG isotype control (A22070, 2 µg/mL, left) or CD201/EPCR Rabbit mAb (A24229, 2 µg/mL, right).