

# ABflo® 594 Rabbit anti-Human IL-5 mAb

Catalog No.: A24235

## Basic Information

### Observed MW

**Calculated MW**  
15kDa

**Category**  
Primary antibody

**Applications**  
FC (intra)

**Cross-Reactivity**  
Human

**CloneNo number**  
ARC53304-ABf594

**Conjugate**  
ABflo® 594. Ex:588nm. Em:604nm.

## Recommended Dilutions

**FC (intra)** 5 µl per 10<sup>6</sup> cells in  
100 µl volume

## Background

This gene encodes a cytokine that acts as a growth and differentiation factor for both B cells and eosinophils. The encoded cytokine plays a major role in the regulation of eosinophil formation, maturation, recruitment and survival. The increased production of this cytokine may be related to pathogenesis of eosinophil-dependent inflammatory diseases. This cytokine functions by binding to its receptor, which is a heterodimer, whose beta subunit is shared with the receptors for interleukine 3 (IL3) and colony stimulating factor 2 (CSF2/GM-CSF). This gene is located on chromosome 5 within a cytokine gene cluster which includes interleukin 4 (IL4), interleukin 13 (IL13), and CSF2. This gene, IL4, and IL13 may be regulated coordinately by long-range regulatory elements spread over 120 kilobases on chromosome 5q31.

## Immunogen Information

Gene ID	Swiss Prot
3567	P05113

### Immunogen

Recombinant fusion protein containing a sequence corresponding to amino acids 20-134 of human IL5(NP\_000870.1).

### Synonyms

IL5; EDF; IL-5; TRF; interleukin-5

## Contact

☎ | 400-999-6126

✉ | [cn.market@abclonal.com.cn](mailto:cn.market@abclonal.com.cn)

🌐 | [www.abclonal.com.cn](http://www.abclonal.com.cn)

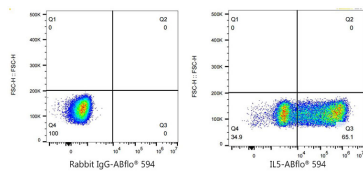
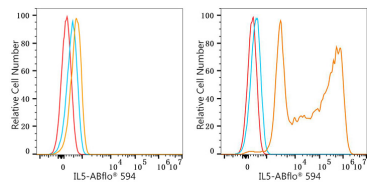
## Product Information

Source	Isotype	Purification
Rabbit	IgG	Affinity purification

### Storage

Store at 2-8°C. Avoid freeze.  
Buffer: PBS with 0.03% proclin300,0.2% BSA,pH7.3.

## Validation Data



Flow cytometry:  $1 \times 10^6$  293T cells (negative control, left) and 293T (Transfection, right) were intracellularly-stained with ABflo® 594 Rabbit anti-Human IL5 mAb (A24235, 5  $\mu$ l/Test, orange line) or ABflo® 594 Rabbit IgG isotype control (A23821, 5  $\mu$ l/Test, blue line). Non-fluorescently stained cells were used as blank control (red line).

Flow cytometry:  $1 \times 10^6$  293T (Transfection) cells were intracellularly-stained with ABflo® 594 Rabbit IgG isotype control (A23821, 5  $\mu$ l/Test, left) or ABflo® 594 Rabbit anti-Human IL5 mAb (A24235, 5  $\mu$ l/Test, right).